

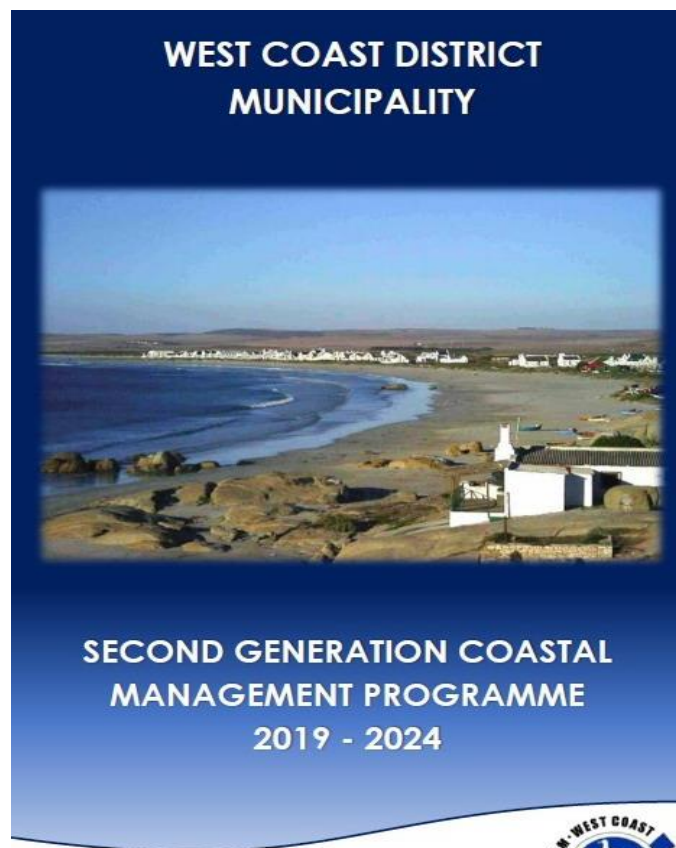


# West Coast District Municipality MCC Meeting Virtual Meeting 22 February 2023



# Coastal Management Program

- Adopted and approved by Council on 4<sup>th</sup> of December 2019



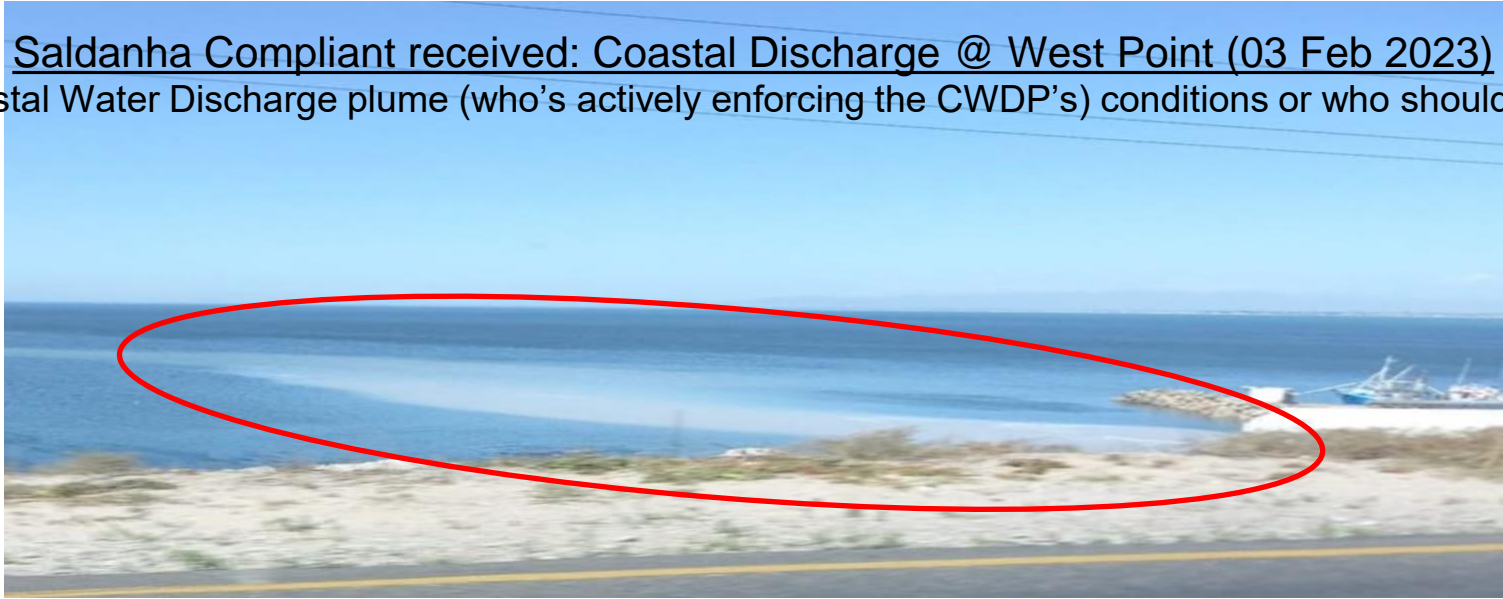
## DRAFT ESTUARY MANAGEMENT ADVISORY FORUMS & MCC's DATES FOR 2023

- **Olifants River:**
  - ~~14 Feb~~; 16 May; 15 Aug; 14 Nov
- **Verlorenvlei:**
  - ~~15 Feb~~; 17 May; 16 Aug; 15 Nov
- **Bergrivier:**
  - ~~16 Feb~~; 18 May; 17 Aug; 16 Nov
- **MCC:**
  - 22 Feb; 24 May; 23 Aug; 22 Nov

## COASTAL & ESTUARY MANAGEMENT

- In previous meeting various E. coli pollution complaints reported by St Helena Bay Water Quality Trust, under investigation by DFFE – possible report back on the situation? (Please see slide 6)

- New: Saldanha Compliant received: Coastal Discharge @ West Point (03 Feb 2023)  
Coastal Water Discharge plume (who's actively enforcing the CWDP's) conditions or who should be?



- WCDM still supporting DWS with the National Estuary Water Monitoring Program as part of the National Estuarine Monitoring Program for Olifants, Verlorenvlei & Berg Estuaries monthly estuarine water sampling.

WCDM is also in the process to set up a DCF meeting between Bergrivier Mun, Saldanha Bay Mun and WCDM to investigate the better coordination of water sampling along the West Coast in partnership with the SBWQT & SHBWQT.

- WCDM EPWP Coastal Teams assisting till 30/06/2023 with various Coastal Management and Alien Clearing work within the West Coast.

# Compliance, Monitoring & Enforcement

Coastal Structure at Small Beach (Grotto Bay) on Unalienated State Land  
(This matter stood over from the last MCC meeting).

Any feedback or status update/progress?



CapeFarmMapper ver 2.6.15

**House no. 4:**  
Mr AP Versfeld  
(Contraberg Farm)  
P.O. Box 57  
DARLING  
7345  
Tel: 022 492 2814

Location Information  
Lat: -33.497376 | Lon: 18.316954  
Unalienated State Land Info  
ID: 32/0  
SG Code: C04600000000000000032

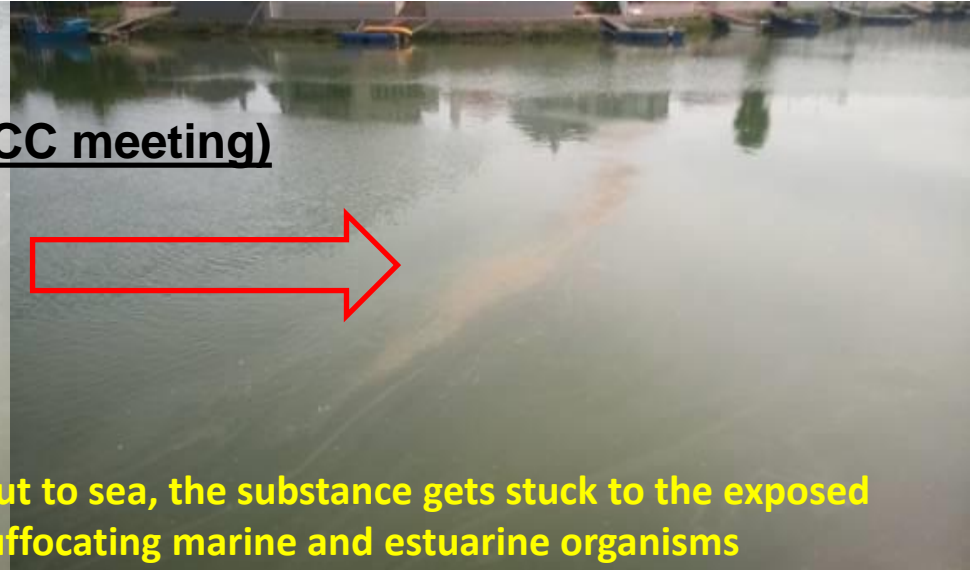
# Compliance, Monitoring & Enforcement

Frequently seen Fatty Oil – Allegedly due to coastal water discharges from Amawandle Pelagic

## Bergriver Estuary Pollution

(This matter stood over from the last MCC meeting)

Any feedback or status update?



Oily sludge remains in the river, not getting washed out to sea, the substance gets stuck to the exposed muddy banks on the edges with low tide – possibly suffocating marine and estuarine organisms

Attention: Dr. Jan Marx  
 Phone: 082 415 0778  
 Email: jantmarx@gmail.com

\*Sample taken: 21 September 2022  
 Sample received and analysed: 21 September 2022  
 Analysis completed: 23 September 2022  
 Sample description: ST HELENA BAY, seawater samples

Sample number	Sample Description	<i>E.coli</i> /100ml	<i>Enterococci</i> /100ml
4 (10h09)	Berg River Fishing Quay (between Eigelaar and Dormac)	370	470
26 (10h02)	Amawandle (end of jetty opposite effluent pipe line~10m)	586 000	±210 000
18 (09h58)	Berg River quay upstream from Food Corp Consumer Brands	106	236
5D (09h54)	Port Owen Yacht Club opposite Bowen Street	18	12
6 (09h34)	Main Road (R27) bridge	540	38
19 (09h18)	Laingville beach opposite resort	60	30
8 (09h02)	West Point Processors (end of pier)	226	40
9 (08h53)	Steenberg's Cove beach	16	21
20 (08h48)	Hannasbaai beach	1	2
22 (08h44)	Beach between Jaloersbaai and Oranjevis	46	20
24 (08h36)	Oranjevis (end of pier)	230	340

Not tested/requested indicated by: (-)



Also, constant high concentration of *E. coli* present at Amawandle (end of jetty opposite effluent pipeline)

Ms ETHNÉ CARLSE  
 MICROBIOLOGIST

# Compliance, Monitoring & Enforcement

Alleged stream of sewerage pollution running into the Coastal Zone at Lamberts Bay (Strandstraat) due to Loadshedding/malfunctioning of infrastructure – Matter has been referred to Cederberg Local Mun & WCDM Health Dept



## SAMPLE DESCRIPTION

Lab Sample Ref #: CT 23-003183-001

Sample N°: 4878829

Test Date: 28/01/2023

Category Detail: Water

Sample Condition: SEALED

Date Received: 28/01/2023

Product Description\*\*: Storm Water - Lambertsbay

Client Sample N\*\*\*: WC-C 14430

Sampled By\*\*: Mr. Heinrich de Wee

Date Sampled\*\*: 25/01/2023

## ANALYTICAL RESULTS

Tests	Analysis Start Date	Results	Units	Limits [Target value]
<input checked="" type="checkbox"/> Faecal Coliforms METHOD: SWJM 56	27/01/2023	>15000	cfu/100ml	Result < 1000 cfu/100ml

NC

Comment: Temperature 5.4°C

Accredited analysis

\* Non Accredited analysis

NC Non Conformance

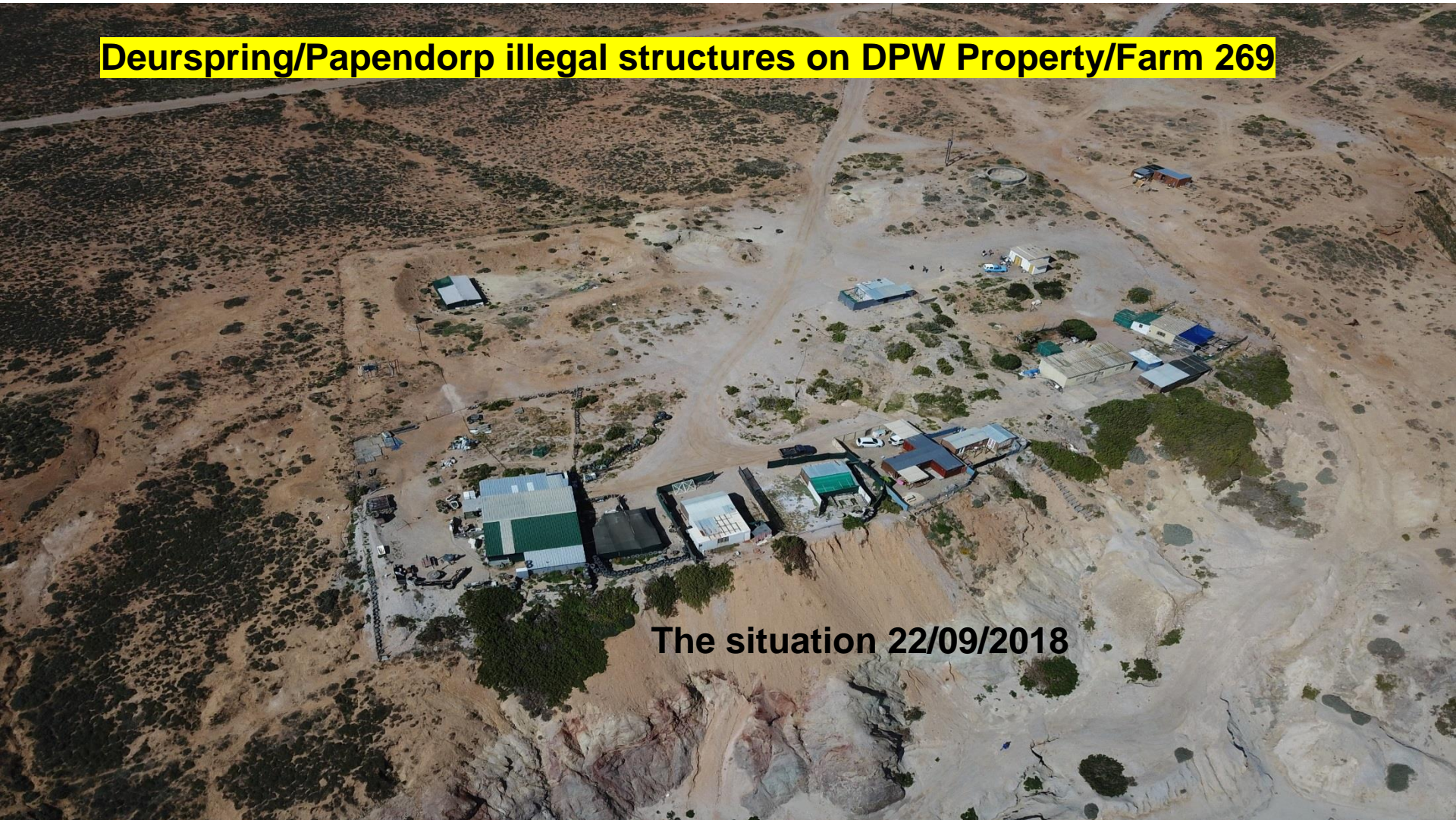
\*\* Customer provided data

Changed Data

# Compliance, Monitoring & Enforcement

DFFE was going to issue Repair/Removal Notices structures within coastal zone at Deurspring

**Deurspring/Papendorp illegal structures on DPW Property/Farm 269**



The situation 22/09/2018

Illegal Coastal Structures on DPW property – south of Olifants Estuary on coastal cliffs reported during 2018 to DFFE & Operation Phakisa



# Compliance, Monitoring & Enforcement

Another new house was built during December 2022 at Deurspring/Farm 269



# Compliance, Monitoring & Enforcement

## Moonstone Diamond Mining north of Doringbaai – Current situation



• **Red Tide Incident at Elands Bay: 08/02/2023 – 17/02/2023**



Die uitgespoelde krewes. INLAS: Mense kan gesien word met hul emmers terwyl hulle kreef optel en wegdra. Foto: SKERMGREEP

## Mense dra emmers vol krewes weg ná rooigety by Elandsbaai

Carl Thomas

Mense het die afgelope week met emmers vol krewes wegge-loop nadat sowat vyf ton kreef sedert Dinsdag weens rooigety langs die kus by Elandsbaai uitgespoel het.

'n Gebeurlikheidsplan is sedertdien ingestel om die uitgespoelde krewes te verwyder en die oerlewendes te rehabiliteer.

Die departement van bosbou, visserye en die omgewing sê luidens 'n verklaring hulle word met opruimingsoperasies ondersteun deur die Weskus-distriksmunisipaliteit, die Cederberg-munisipaliteit, die polisie, die weermag, die provinsiale regering en plaaslike gemeenskappe aangrensend aan die geraakte gebiede.

Lewende krewes word gered en gerehabiliteer, en sal veilig terug in die see geplaas word sodra die rooigety-bedreiging bedaar het.

Albi Modise, woordvoerder van die departement, het gister by navraag gesê 2,3 ton lewende

die krewes is reeds na gebiede met skoon water, soos Saldanha, verskuif.

"Voordat ons lede kon ontplooi, het sowat 100 mense al op die eerste dag krewes gevat. Woensdagaand was daar weer 'n groep van sowat 200 wat krewes gevat het. Die presiese getalle wat deur hierdie mense gevat het, is nie duidelik nie," sê Modisi.

Modisi sê dit is onveilig vir mense om die krewes te vat, want dit hou gesondheidsrisiko's in weens die alge.

Rooigety word veroorsaak deur die opbloeie van mikroskopiese alge. As dit naby die kus gekonsentreer raak, veral wanneer die water kalm is, begin dit afbreek en dit lei tot laer suurstofvlakke in die water, wat tot vrektes onder seediere lei.

"Soos dikwels die geval in die somer en laatsomer is, was daar die afgelope paar weke 'n opbou van erge rooigety in die groter St. Helenabaai-streek. Dit strek tans oor 'n gebied van 50 km tot 60 km in die om-

gewing van Elandsbaai, Lambertsbai en Doringbaai," lui die verklaring.

Vrektes is ook op die strande van Elandsbaai opgemerk.

"Met die voorspelling van ligte westewinde oor die volgende paar dae, is die risiko van verdere vrektes hoog."

Sommige van die alge is ook in staat om gifstowwe te produseer wat in skulpvis kan opbou en 'n gevaar vir menslike gesondheid kan inhou.

"Om hierdie rede word lede van die publiek gewaarsku om nie enige dooie of verrotte vis en skulpvis wat weens die rooigety uitgespoel het, te versamel en te eet nie, aangesien dit 'n ernstige gesondheidsgevaar kan inhou," lui die verklaring.

In 'n video wat *Die Burger* ontvang het, kan gesien word hoe mense met emmers vol krewes wegloop.

*Die Burger* het voorheen berig dat sowat 500 ton kreef einde Februarie verlore jaar by Elandsbaai weens rooigety uitgespoel het.



11 Feb 2023 09:52:35 Bokkom Street



# Compliance, Monitoring & Enforcement

Day visitors & Campers at the Olifantsriver Estuary Floodplain – December/January season **2020** PAPENDORP or PAPEN-CITY as the locals calls it during December



JAN 2020  
Persons - 2300  
Tents 171  
Vehicles 290  
Taxis 9  
Rubberducks 12

Day visitors & Campers at the Olifantsriver Estuary Floodplain – December/January season **2023** – Still ongoing strong with roughly 3000 visitors during December/January 2023 season

Salt Marsh Vegetation being used as windbreaks



Day visitors & Campers at the Olifantsriver Estuary Floodplain – December/January season 2023  
– Still ongoing with roughly 3000 visitors during the December/January 2023 season - Continue

**WCDM Cleanup Operations during Jan/Feb 2023: No Working for the Coast teams are operational, as their contracts ended Sept 2022.**

**Urgent request to Local Mun's to also appoint EPWP teams to clean the coast through their EPWP program/Budget Allocations**



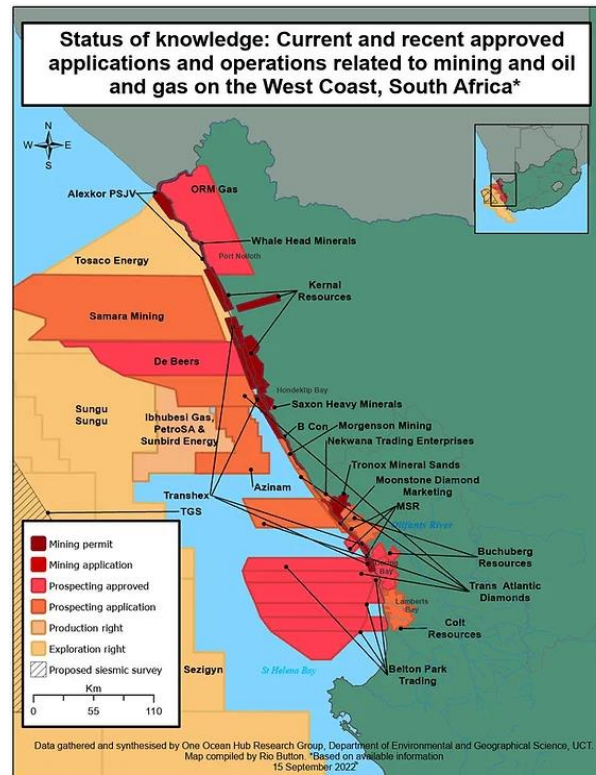
# ESTUARY MANAGEMENT ADVISORY FORUMS

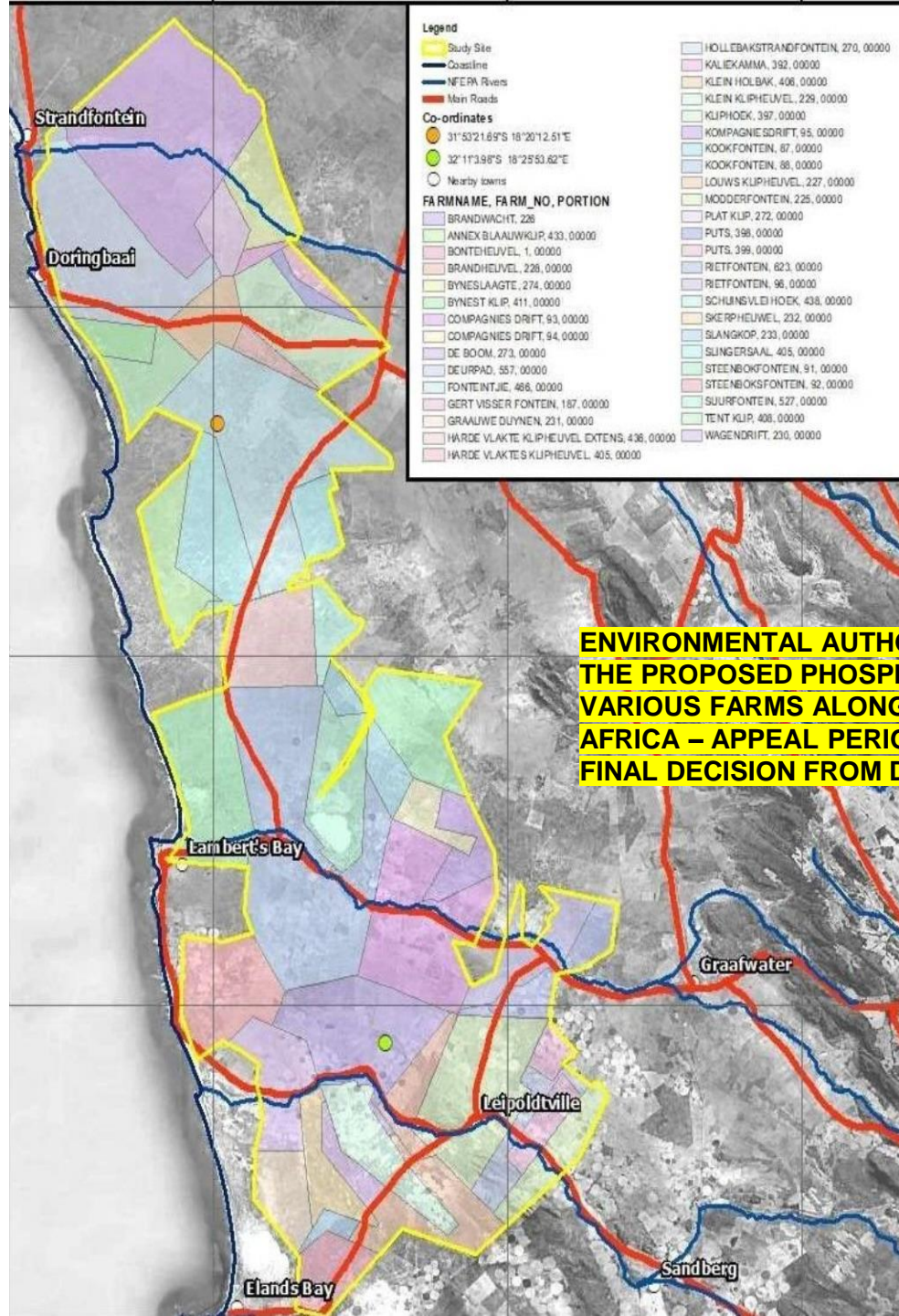
- Olifants River Estuary:

- Estuary Advisory Forum meeting was attended on the 14<sup>th</sup> of February 2023

- Main Issues discussed and raised at the forum:

- 1) Formal Protection needed at Olifants Estuary, still needs to happen to protect what's left
- 2) Safety of the vessels (SAMSA) linked to the fishing permit conditions (DFFE)
- 3) Prospecting and Mining applications





**ENVIRONMENTAL AUTHORISATION WAS GRANTED FOR THE PROPOSED PHOSPHATE ORE PROSPECTING RIGHT ON VARIOUS FARMS ALONG THE WEST COAST OF SOUTH AFRICA – APPEAL PERIOD ENDED 09 JAN 2023 – AWAITING FINAL DECISION FROM DFFE**

## ESTUARY MANAGEMENT ADVISORY FORUMS

- **Verlorenvlei Estuary:**
- Estuary Advisory Forum meeting was attended on the 15<sup>th</sup> of February 2023
- **Main Issues discussed and raised at the forum:**
- 1) **Extreme Low water levels of Verlorenvlei/RAMSAR Site linked to that is the Reserve Determination Study in process and S24G applications.**
- 2) **Illegal ORV driving through the vlei/RAMSAR site between Elands Bay North and South via the Transnet Service Road**
- 3) **Eland's bay and Lamberts' bay dump/solid waste sites complaints/notices issued by the DEA&DP regarding its proper Management**



## ESTUARY MANAGEMENT ADVISORY FORUMS

- **Bergrivier Estuary:**

- Estuary Advisory Forum meeting was attended on the 16<sup>th</sup> of February 2023

- **Main Issues discussed and raised at the forum:**

- 1) POMA started their dredging on 16/02/2023 at Port Owen after receiving their **Duping at Sea Permit (3 years) and CWDP (5 years) from DFFE** for dredging/discharging end of last year from DFFE.
- 2) Redefining the **Berg Estuary as a core area within the Cape West Coast Biosphere Reserve** – Positive news that this process is underway through the CWCBR
- 3) CapeNature and **Bergrivier Mun MOA has been renewed** to implement the Berg River Municipal By-law with specific minimum conditions/req's as stimulated in the agreement.
- 4) **Nighttime Poaching on Berg Estuary** still an ongoing issue - DFFE mandate and function.
- 5) **Informal & Illegal developments along the estuary** – CapeNature did inspections and will follow up with DEA&DP regarding illegal developments i.e. Knorvarkie Resort (Sec24g) and Flaminke vlei Resort, as these cases has been formally referred to DEA&DP's compliance & enforcement years ago. Status update and presentation required on the history, current status and the way forward at next BEAF meeting.

THANK YOU  
DANKIE

Charles Malherbe  
West Coast DM  
022 433 8400  
[cjmalherbe@wcdm.co.za](mailto:cjmalherbe@wcdm.co.za)