



## Greater Saldanha Bay Inter-Governmental Task Team

### DRAFT AGENDA

**DATE:** 18 November 2020

**VENUE:** Langebaan Town Hall (56 Suffren Street, Langebaan) and

via Virtual Meeting on MS TEAMS (Please use this LINK to connect to virtual meeting:

[https://teams.microsoft.com/l/meetup-join/19%3ameeting\\_N2lyZTNmMDYtYzk1Yy00YWQwLTg2NGMtMTI2NGZmODJkMWU5%40thread.v2/0?content=%7b%22id%22%3a%22ae74bf7f-cfc3-4760-a1fe-0731afaa5502%22%2c%22oid%22%3a%22577dfa4-2568-4886-9847-0786161ce1bf%22%7d](https://teams.microsoft.com/l/meetup-join/19%3ameeting_N2lyZTNmMDYtYzk1Yy00YWQwLTg2NGMtMTI2NGZmODJkMWU5%40thread.v2/0?content=%7b%22id%22%3a%22ae74bf7f-cfc3-4760-a1fe-0731afaa5502%22%2c%22oid%22%3a%22577dfa4-2568-4886-9847-0786161ce1bf%22%7d) )

**TIME:** 11h00

**CHAIR PERSON IGTT STAKEHOLDERS:** HOD Piet van Zyl

Time	No.	Item	Responsible
11h00 – 11h15	1	Stakeholder Forum Meeting 1.1. Welcome 1.2. Confirmation of last minutes (requested wording changes by DEDAT) 21 November 2019 minutes were circulated in April 2020 and a report on action items was provided in August 2020 via email) 1.3. No Matters Arising	<b>Chairperson:</b> <b>HOD: Piet van Zyl</b>
11h15 – 11h30	2	<b>Presentation:</b> 2.1. SB IDZ and DEDAT presentation	Carol Molemane & Herman Jonker
11h30 – 13h00	3	<b>3. Agenda: (Discussion)</b> 3.1. Air Quality 3.2. Transport (Road and rail) 3.3. Waste Management 3.4. Small Harbours 3.5. Aquaculture Development Zone	DEA&DP/WCDM/SBM DTPW (Stacy Kleinhans) DEA&DP (August Hoon) DPWI (B. Geldenhuys) DEFF (M. Pretorius)
		<b>4. New matters / Additions</b> 4.1. Saldanha Biod. Offset Strategy 4.2. Coastal Erosion and way forward 4.3. Feedback on State of the Bay report	Jeanine Africa leptieshaam Bekko Cllr. Andre Kruger
		Meeting closed Dates for next IGTT and IGTT Stakeholder Forum meeting to be circulated once confirmed with HOD	



## Greater Saldanha Bay Inter-Governmental Task Team

### Stakeholder Forum

#### MINUTES

**DATE:** 18 November 2010  
**VENUE:** Langebaan Town Hall and Virtual via MS TEAMS  
**TIME:** 11h00 – 13h00  
**CHAIRPERSON:** Piet van Zyl

Time	No.	Item	Responsible
11h00	1.	Welcome, Introduction and Apologies.  The Chairperson, HOD Piet van Zyl welcomed all those present in venue and online via TEAMS to the meeting. The Chairperson indicated the previous meeting was held almost a year ago and a lot has happened since then courtesy of COVID pandemic. Things have moved on including the ways that we conduct business. Being able to hold hybrid meeting is a positive way to continue IGTT work. Today we have 12 ppl in hall and also attendees online. Online attendance registers to be completed while those in venue will sign a hardcopy register. An update report was collated by secretariat that was circulated to stakeholders in August. This included matters arising and action items from the previous meeting See attached attendance registers. <b>(Annexure A and Annexure A1).</b>	

		<p><b>Apologies:</b>  Andre Wicht  Lindsey Gaffley (SBM)  Kobus Munro  Natalie Hayward  Barbara van Geems  David Wright  Charles Malherbe  Bhawoodien Parker  Gottlieb Arendse  John Wilson</p>	<p>Carl Skidmore  Anthony Teale  Alan Carnegie  Jan Marx  Joy Leaner  Catherine Stone  Michelle Pretorius  Pat Bopape  Pierre Nel  Heinrich Mettler  Basson Geldenhuys</p>	
	1.2.	<p>Confirmation of Agenda and previous meeting minutes (21 November 2019)</p> <p>Additions to Agenda:  1.4. Update on Saldanha SEA  4.1. Saldanha Biod. Offset Strategy, Jeanine Africa  4.2. Coastal Erosion and way forward, Marlene Laros  4.3. State of the Bay, Councillor Andre Kruger</p> <p>There were no changes to previous meeting minutes.  The minutes were proposed for acceptance by Councillor Kruger and seconded by Mr van Wyk.</p>		
	1.3.	<p><b>Matters Arising</b></p> <p>There were no outstanding Matters arising as these were addressed in Report circulated in August.</p>		
	1.4.	<p>Update on Saldanha SEA</p> <ul style="list-style-type: none"> <li>• ML reported that the objectives of the IGTT and the stakeholder forum is specifically to engage regarding a sustainable development pathway within Saldanha Bay.</li> <li>• All government depts represented on forum to achieve targets and objectives.</li> <li>• Saldanha SEA conducted was Phase 1 of SEA and Decision Support Product was concluded and received in October 2019. At this time consideration was given to funding Phase 2. Currently DEADP is in a difficult position within current financial context to fund projects. As such the Dept is looking to forge partnerships to fund and move ahead with Phase 2.</li> </ul>		Marlene Laros

		<ul style="list-style-type: none"> <li>• HoD van Zyl added that the Dept has experienced various fiscal challenges in light of COVID. The way that the DEA&amp;DP have been working as a collective and as the IGTT and stakeholder forum is so collaborating is how we will have to work together in future to co-fund and collaborate on initiatives. A lot of work still needs to be done and we have made a lot of progress to date. As an observer in the State of the Bay event, there was mainly good news but there are areas of concern as well.</li> <li>• The current situation will continue into 2021 with the 5yr recovery plan as is an indication of the fiscal challenges that the country currently faces.</li> </ul>	
	2.	<p><b>2. Presentations:</b></p> <p>2.1. Overview of SB IDZ Presentation provided by Carol Molemane– See presentation attached as <b>Annexure B</b></p> <ul style="list-style-type: none"> <li>• Presentation was focussed on purpose and objectives of SBIDZ and projects that were and are being facilitated by SBIDZ</li> <li>• On 26 Nov. 2020 an MOU will be signed between SBM, WCDM, SB IDZ regarding finding synergy between economic development without compromising the environment.</li> </ul> <p>DEDATs Recovery Plan Focus Areas related to Jobs by Herman Jonker - See presentation attached as <b>Annexure C</b></p> <ul style="list-style-type: none"> <li>• DEDAT has conducted various modelling using internal and external data. And used mild, medium and severe scenarios modelled which was used to inform the development of a recovery line. Timeframe targets have been set for implementation of the recovery plan</li> <li>• 6 priority areas were included in the Economic Recovery Plan and projects are active and are centred around the Economic Recovery Plan</li> </ul> <p><b>Discussion:</b></p> <ul style="list-style-type: none"> <li>• HOD van Zyl indicated that the timing for economic recovery is important and abinet has a 4 prong approach to addressing economic recovery. In WC the key objective is to ensure that a resurgence of COVID is avoided considering the efforts and investments that have been made in response to COVID. Recently we are experiencing spikes in COVID cases in Garden Route and Lutzville area. While strides are being made wrt vaccine / serum for COVID one must keep a watchful eye on the stats. The Recovery Plans that Herman has referred to are being formulated and reported on, on a regular basis. For a long time, the strategic significance of the IDZ was visible but the recovery significance on economic development and growth is also important.</li> </ul>	

		<ul style="list-style-type: none"> <li>• Mr Halvorsen added that NGO's in the area are in a position to contribute to monitoring and compliance due to their knowledge of the area.</li> <li>• Ms Molemane responded that the IDZ is funded by WC Gov and is focussed on infrastructure. It does not fund compliance monitoring. Although currently there is no system in place discussions are already underway within the IDZ to conduct monitoring to determine impact on the environment. Using NGOs to conduct monitoring must first be discussed with managers however Ms Molemane will take this matter up with the IDZ management</li> <li>• Mr van Boom added that DEA&amp;DP issue EA's for some developments within the IDZ and compliance monitoring will form part of the conditions of approval and the ECO must be appointed to perform these functions. The environmental legislation also then requires that an environmental audit be conducted. These reports must be submitted to DEA&amp;DP for review. Where there are concerns DEA&amp;DP will conduct their own compliance inspection and monitoring as well.</li> <li>• Mr van Wyk further noted that this topic has been under discussion for 4 to 5 years already. And the DEA&amp;DP, in response to these issues, developed a general EMP that included a component of marine monitoring. Mr van Wyk raised specific concerns regarding the EA issued within the IDZ that does not address the monitoring impact on the marine environment and requested that the IDZ EMP be aligned to the generic one to also speak to marine monitoring and not just land based monitoring.</li> </ul> <p><b>Action:</b></p> <ul style="list-style-type: none"> <li>• <b>HoD van Zyl indicated that a response on this matter is required (jointly by DEFF and DEA&amp;DP). HOD further indicated that Mr van Boom could respond to the issue of the EA's issued by DEA&amp;DP but the larger development was authorised by DEFF. HoD van Zyl requested Mr van Wyk to submit written concerns via secretariat to then forward to the relevant officials who would develop an official joint response by DEFF and DEADP.</b></li> </ul>	<p>Mr van Wyk / Secretariat / Mr van Boom / DEFF</p>
	<p>3.</p>	<p><b>Agenda (Project Feedback and Discussion)</b></p> <p>3.1. Air Quality</p> <p>Mr Stoltz reported as follows:</p> <ul style="list-style-type: none"> <li>• Officials from DEA&amp;DP, Saldanha Bay Municipality and the National DEFF held a meeting on 06 July 2020 to discuss the approaches followed in other Provinces to address complex air quality matters (to identify best practice in terms of dealing with complex air quality matters).</li> </ul>	

	<ul style="list-style-type: none"> <li>• The DEFF has advised that their approach has been to develop Stakeholder Forums that considers all activities within a given area that could contribute to air pollution and to address such matters via action plans.</li> <li>• From the discussions held, it became evident that the process followed by the Greater Saldanha Bay IGTT is similar to what National DEFF is proposing for areas where there are complex air quality matters.</li> <li>• As the Greater Saldanha Bay IGTT seeks to work in the region holistically and strategically, this approach is advised to continue, as the impacts on the biophysical nature in the region are addressed in an integrated manner.</li> <li>• The Air Quality management team will also continue to engage with officials from the WCDM and SBM, on matters of air quality management in the region.</li> </ul> <p>WCDM and SBM had nothing additional to add.</p>	
	<p>3.2. Transport (Road and Rail)</p> <p>Stacy Kleinhans reported as follows:</p> <ul style="list-style-type: none"> <li>• DTPW received a letter from DEA&amp;DP regards the transportation of Mn via road and rail. DTPW intends to convene a meeting with DEADP, SBM and NDoT. DTPW have made repeated requests however NDoT have not yet provided dates for the meeting to take place. DTPW will continue to follow-up in order to move forward. In addition NDoT have been invited to participate at the IGTT.</li> <li>• Within DTPW discussions have been initiated to address issues raised. It is anticipated that a positive way forward will be achieved after meeting with DEADP, SBM and NDoT.</li> <li>• A summary of DTPW activities in the area as follows: <ul style="list-style-type: none"> <li>○ The DTPW is in the process of constructing the Vredenburg / Saldanha bypass by linking the R45 to the R79, the new link will divert the re-aligned R45 eastwards near Langebaanweg Airbase, (new interchange), south of the Dinosaur Park and then link to the R79 with a new interchange on the R27.</li> <li>○ A new Port Interchange will be constructed to the east of the Sishen Saldanha rail line on the R79, which links the R27 to MR 238, road link between the towns of Saldanha and Vredenburg. Main Road 559, parallel to the R79, which links Langebaan to Saldanha has also been completed.</li> <li>○ These initiatives might have a positive impact in terms of the overall efficiency of the road transport system in the area.</li> <li>○ The current roadworks includes various initiatives to improve linkages and connectivity via road network wrt road to rail.</li> </ul> </li> </ul> <p><b>Discussion:</b></p>	

	<p>HOD van Zyl further added that this matter was brought up in the November meeting for action and thus a letter was sent to DTPW to prompt action regards the transportation of ore. Information was received from SBM regards this in the earlier members meeting and this information will be forwarded to Ms Kleinhans for further action.</p>	
	<p>3.3. Waste management:</p> <p>August Hoon reported as follows:</p> <ul style="list-style-type: none"> <li>• Directorate Waste Management, received the revised substantive amendment application to amend the waste management licence for a 3-meter height extension for the two new cell being constructed at the Vredenburg WMF from a 10 meter height above natural ground level to a 13 meter above natural ground level, which is currently considered by the Directorate: Waste Management.</li> <li>• <b>COVID-19 WMO`s workstream meeting</b> conducted by the Directorate: Waste Management to assist and guide municipalities during the pandemic:</li> <li>• At the onset of the pandemic we met every week but with the decline of COVID-19 cases and waste generation it was decided to meet only twice per month (every 2nd week).</li> <li>• Platform was used to discuss the challenges within municipalities, provide solutions, and look at best practices within municipalities and to provide overall support from the Directorate.</li> <li>• The Directorate: Waste Management developed protocols and guidelines to deal with COVID-19 waste, namely       <ol style="list-style-type: none"> <li>• 1. Protocol for the managing general household waste during COVID-19 pandemic (Amended)</li> <li>• 2. Guidelines for the management of waste at quarantine and isolation field facilities/centres</li> <li>• 3. Protocol for managing waste from offices and premises of businesses and institutions during the COVID-19 pandemic.</li> </ol> </li> <li>• The overall COVID-19 cases at municipal waste management departments declined.</li> <li>• <b>New Webster (Sterilisation &amp; Macerator Technology)</b> that has been implemented by the Department of Health to treat the HCRW generated at clinics.</li> <li>• Pilot was conducted from 2016 – 2017 at Khayelitsha District Hospital – sterilise the waste, this is pilot was a huge success (previously daily collections but now only once per month)</li> <li>• New Webster shred and sterilise the waste at 153 degrees Celsius</li> <li>• Nine of these units will be installed at Provincial Hospitals within the province and one will be installed at Vredenburg Hospital (NW 15 - Sterilisation &amp; Macerator Technology).</li> </ul>	

	<p>3.4. Small Harbours Mr Geldenhuys informed the meeting he had technical difficulties and provided apologies. DPWI provided a written update via email to the secretariat which was read out at the meeting as follows;</p> <p>SMALL HARBOURS REPORT                      GSB-IGTT MEETING                      18 NOVEMBER 2020</p> <p>Repair and Maintenance Programme to the Proclaimed Fishing Harbours</p> <ol style="list-style-type: none"> <li>1. Dredging: <ol style="list-style-type: none"> <li>a. Dredging is currently taking place in Lamberts Bay and St Helena Bay with Laaiplek to commence in December 2020 / January 2021</li> <li>b. Overall completion for this Work Package is 55%</li> <li>c. No dredging is required for Saldanha Bay and Pepper Bay harbours</li> </ol> </li> <li>2. Repairs to slipways: <ol style="list-style-type: none"> <li>a. St Helena Bay, Laaiplek and Lamberts Bay Harbours have been completed already</li> <li>b. Saldanha Bay slipway is part of the augmented BFI Funding and the tender has been awarded with the contractor currently establishing site</li> </ol> </li> <li>3. Civil Infrastructure: <ol style="list-style-type: none"> <li>a. St Helena Bay, Laaiplek and Lamberts Bay Harbours are currently sitting at 20% completion for the work package</li> <li>b. Saldanha Bay and Pepper Bay contract has been awarded with the contractor to establish site in early December 2020</li> </ol> </li> <li>4. Electrical Infrastructure: <ol style="list-style-type: none"> <li>a. St Helena Bay, Laaiplek and Lamberts Bay Harbours are currently sitting at 60% completion for the work package</li> <li>b. Saldanha Bay and Pepper Bay tender had to be re-advertised as the bids were non-responsive due to expired CIDB grading's. The planned Letter of Appointment for the re-advertised tender is early December 2020.</li> </ol> </li> </ol>	
	<p>3.5. Aquaculture Development Zone Maxhoba Jezile reported as follows:</p> <ul style="list-style-type: none"> <li>• A new ECO was appointed on the 01st April 2020 for a 12 month contract ending September 2021.</li> <li>• The DEFF appointed Anchor Research and Monitoring to undertake environmental monitoring for the ADZ. They produced two reports these were circulated to the</li> </ul>	



		<p>Aquaculture Management Committee on the 3rd August 2020 and the Consultative Forum on the 14th September 2020. The reports can be requested from the secretariat for those that are interested.</p> <ul style="list-style-type: none"> <li>• Fisheries Management applied for a Part 1 amendment to correct administrative errors contained in the Environmental Authorisation this was approved on the 14th September 2020, four appeals were received. Fisheries Management is to submit a responding statement on the 16 November 2020 for the Ministers consideration.</li> </ul> <p>Discussion:</p> <ul style="list-style-type: none"> <li>• Mr van Wyk noted for the meeting that there are some concerns with regards to information in the Anchor Reports as it relates to the discovery of a reef below some of the aquaculture facilities and must be addressed.</li> </ul>	
	4.	<p><b>New matters / Additions</b></p> <p>4.1. Progress Report on Saldanha Bay Offset Strategy and linkages with SDF and EMF – Jeanine Africa</p> <ul style="list-style-type: none"> <li>• The Strategic Offset project was initiated in 2017 to unlock industrial development and ensure protection of sensitive areas.</li> <li>• Study was conducted by Dr Hollness and the document was signed off by MEC on 5 August 2020 and was circulated.</li> <li>• This strategy must now be implemented, and implementation mechanisms are being looked at.</li> <li>• The Saldanha EMF is being reviewed to incorporate the offset information. It is anticipated that an overlay zone will be incorporated into municipal zoning scheme.</li> <li>• A workshop will be held in January 2021 to workshop possible implementation mechanisms</li> </ul> <p><b>Action:</b></p> <ul style="list-style-type: none"> <li>• <b>HoD van Zyl requested the relevant docs be circulated to IGTT</b></li> </ul> <p>4.2. Coastal Erosion and way forward since previous meeting – Ieptieshaam Bekko</p> <ul style="list-style-type: none"> <li>• A site visit was held on 23 October looking at erosion at 3 sites in Langebaan</li> <li>• Although the erosion along the Langebaan coastline has been occurring over a period of time it has become apparent once again that a need for a more strategic approach is required.</li> <li>• The Department had previously initiated the commissioning of a sediment study for Saldanha Bay as was recommended by the WC CML project, the Saldanha SEA as well as the assessment that was conducted by Dr Andrew Mather last year (2019). Unfortunately, due to financial constraints the sediment study was not conducted.</li> </ul>	<p>Secretariat to circulate documents. <b>(Shared on 30 November 2020)</b></p>

	<ul style="list-style-type: none"> <li>• As an outcome of the SEA that was conducted in 2019, the DEA&amp;DP had issued a letter to other Departments to consider collaborative efforts to jointly financing a sediment study for the Bay. At the site visit the SBM MM was keen to explore options for financing the study. The DEADP will engage with and support SBM with the drafting of a TOR for a sediment study based on the previous ToR as well as on the sediment study that was commissioned for Mossel Bay Municipality.</li> <li>• The DEA&amp;DP is not in a position to provide financial support but will support SBM with technical advice.</li> </ul> <p>Discussion:</p> <ul style="list-style-type: none"> <li>• Mr Halvorsen wondered when will the coastal setback line policy for the Western Cape be implemented as the studies were done in 2015?</li> <li>• Ms Bekko responded that the Department is moving ahead with CML Implementation Project and intend to gazette a Notice of Intent to establish CMLs for West Coast, Overberg and Garden Route in next quarter.</li> <li>• Despite challenges with appointing a service provider, DEADP will move ahead with CML establishment and will support Munics to incorporate coastal risk information into municipal zoning schemes.</li> <li>• The Department has established a Task Team that is currently finalising a circular for attention of coastal munics regarding consideration of coastal risk and ICMA in land use decisions. This Task Team will also act as steering committee for the Implementation of the CMLs.</li> <li>• Mr van Wyk raised concern regarding the lack of monitoring wrt Langebaan groynes by the SBM.</li> </ul> <p><b>Action:</b></p> <ul style="list-style-type: none"> <li>• <b>HOD van Zyl requested coastal management and Development management to investigate the allegation made by Mr van Wyk re lack of compliance with the EA and report back at next meeting.</b></li> <li>• <b>Ms Bekko indicated she would follow up with Mr van Boom regarding compliance of the EA issued for Langebaan groynes.</b></li> </ul> <p>4.3. State of the Bay Feedback – Councillor Kruger</p> <ul style="list-style-type: none"> <li>• See YouTube video / Webinar link: <a href="https://youtu.be/-fr2pxAe_m8">https://youtu.be/-fr2pxAe_m8</a></li> <li>• Councillor Kruger indicated that even through COVID-19 the SBWQT continued to do the monitoring of the Bay and could thus present on findings.</li> <li>• In general the state of the bay remained in a stable condition</li> <li>• The discovery of the reef system underneath some of the aquaculture areas is of concern and must be investigated</li> </ul>	<p>leptieshaam Bekko / Eldon van Boom</p>
--	--	---

		<ul style="list-style-type: none"> <li>Two problem areas were identified ie. State of the birds in the bay, not only the migrant birds but also the resident birds on the island and the fish stocks in the bay are in dire straits. Have requested that DEFF Fisheries look at managing the fish stocks specifically the white stumpnose for the area.</li> <li>The SBWQT is working closely with St Helena Bay water quality trust and their State of the Bay is happening on 20 November 2020. That area is also of concern as there are a larger number of fish factories etc in that area. They are operating and doing well.</li> </ul>	
	7.	<p><b>Closure</b></p> <p>Next meeting subject to diary of HoD that is informed by cabinet and other high-level meetings. Meeting dates will be circulated when available.</p> <p>Meeting closed at 13h00</p>	Secretariat to circulate meeting dates once received.

Chairperson: ..... Date: .....

Mr van Zyl  
Head of Department  
Department Environmental Affairs and Development Planning









## Welcome to the Saldanha Bay Industrial Development Zone

The first Southern African Special Economic Zone to include a port.

A Hub Dedicated to The Oil and Gas Industry and Marine Repair  
and Fabrication Cluster.

Shaping A Vibrant Marketplace Where Investors, Local Businesses  
and Communities Can Unlock Economic Growth.



**SALDANHABAY**  
INDUSTRIAL DEVELOPMENT ZONE

## Overview on the Saldanha Bay IDZ

18 November 2020

IGTT Presentation

# Contents

1. Who we are
2. SBIDZ Shared Mandate and Responsibility
3. Value Proposition
4. Local Skills and Enterprise Development
5. Innovation campus
6. SSOS: Way forward







**1**

**Who we are**

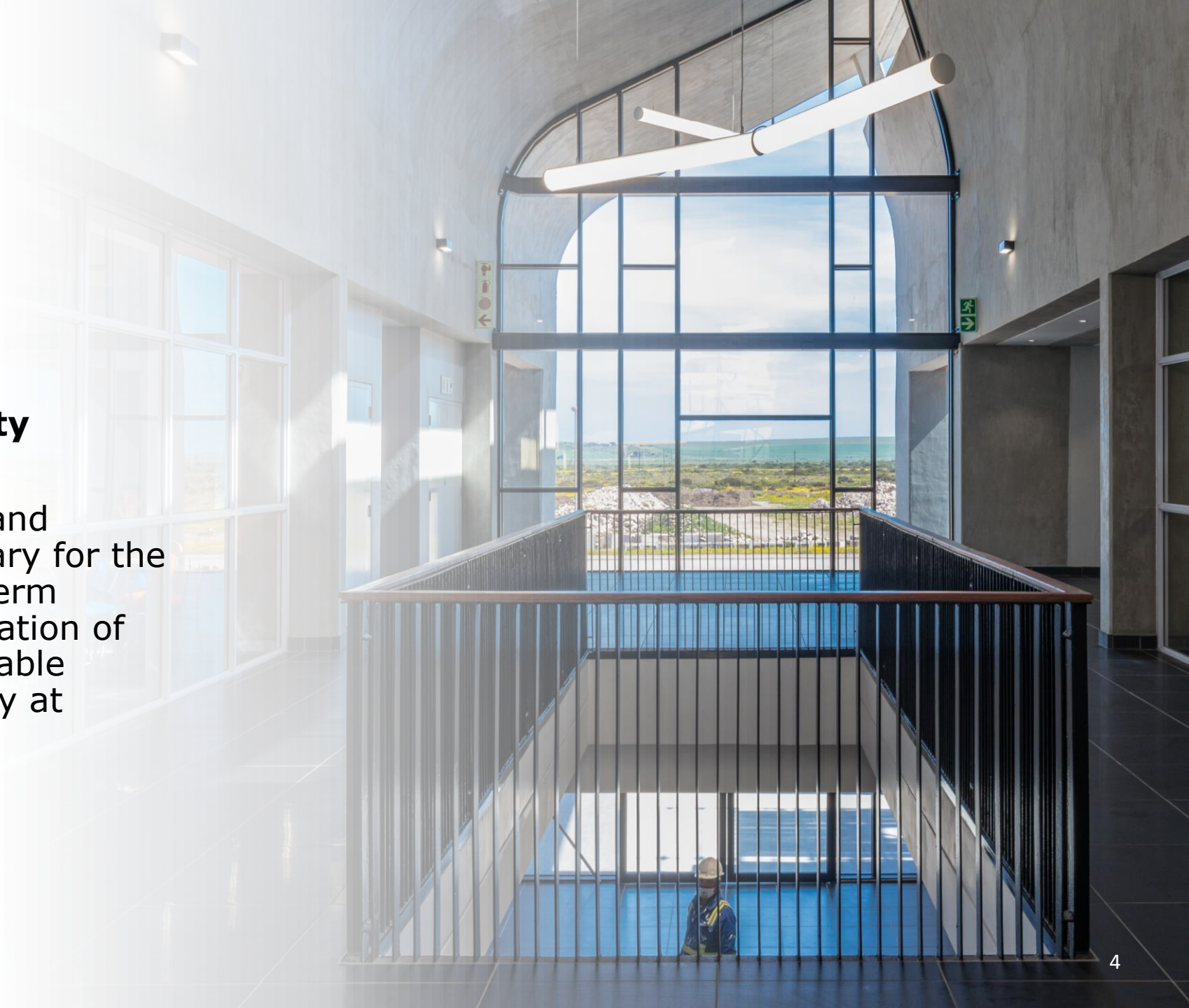


# The SBIDZ Promise

---

## **People, Profits and Prosperity**

The SBIDZ promises to create and maintain the conditions necessary for the immediate, medium and long-term development of people; the creation of sustainable prosperity; and durable business growth and profitability at Saldanha Bay.





# Vision

---

Our vision is to be a World-Class Oil & Gas and Maritime Services Centre in Africa



# Mandate

---

- **We invest in infrastructure, facilities and properties.**
  - Serviced Land | Office & Tenant Buildings | Common-User Facilities | Research, Development & Innovation | Estate Management
- **We invest in profitable processes.**
  - Customs Control Area | Standard Operating Protocols | SEZ Incentives
- **We invest in business relationships.**
  - TNPA | SBM | PTM | WCG | DTIC | SARS | IDC | Industry | Labour and many more
- **We invest in people.**
  - SETAs | Institutions | Local Business | Local Community



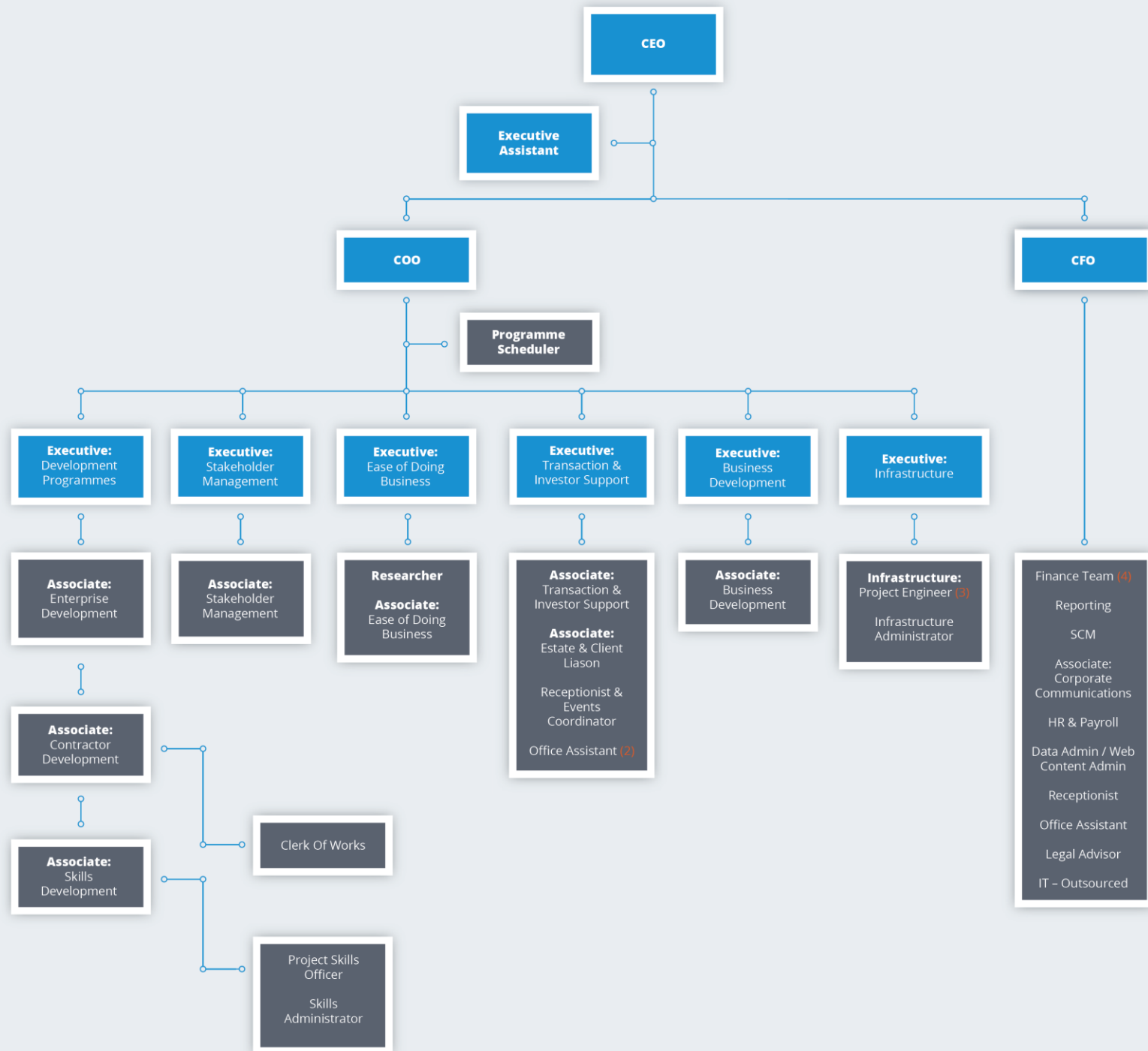
# Company Structure & Operations



- Schedule 3D Entity; 100% shareholding by WCG
- Shareholder's Representative: MEC David Maynier
- Board Composition: Institutional Partners, Private Sector Non-Executive Directors & Independent Members
- Board Committees:
  - Investment Committee
  - Human Resources, Remuneration & Social and Ethics Committee
  - Audit, IT and Risk Committee

# Organisational Structure

- CEO, COO, CFO structure.
- CFO leads corporate services functions; COO leads operational delivery functions.
- **Development Programmes** drives our inclusionary and transformational needs.
- **Stakeholder Management** drives our multi-roleplayer needs.
- **Ease of Doing Business** drives our proactive business-friendly environment needs.
- **Transaction & Investor Support** drives our commercial sustainability needs.
- **Business Development** drives our investment promotion and market access needs.
- **Infrastructure** drives our master planning and zone readiness and attractiveness needs.





# 2

## Shared Mandate & Responsibility

# SBIDZ –LC Responsibility

- **Promote, Manage & Market** the SBIDZ
- **Acquire & Lease Land**
- Provide **Internal Infrastructure** to support investors in the SBIDZ areas
- Facilitate the **Ease of Doing Business** in the SBIDZ





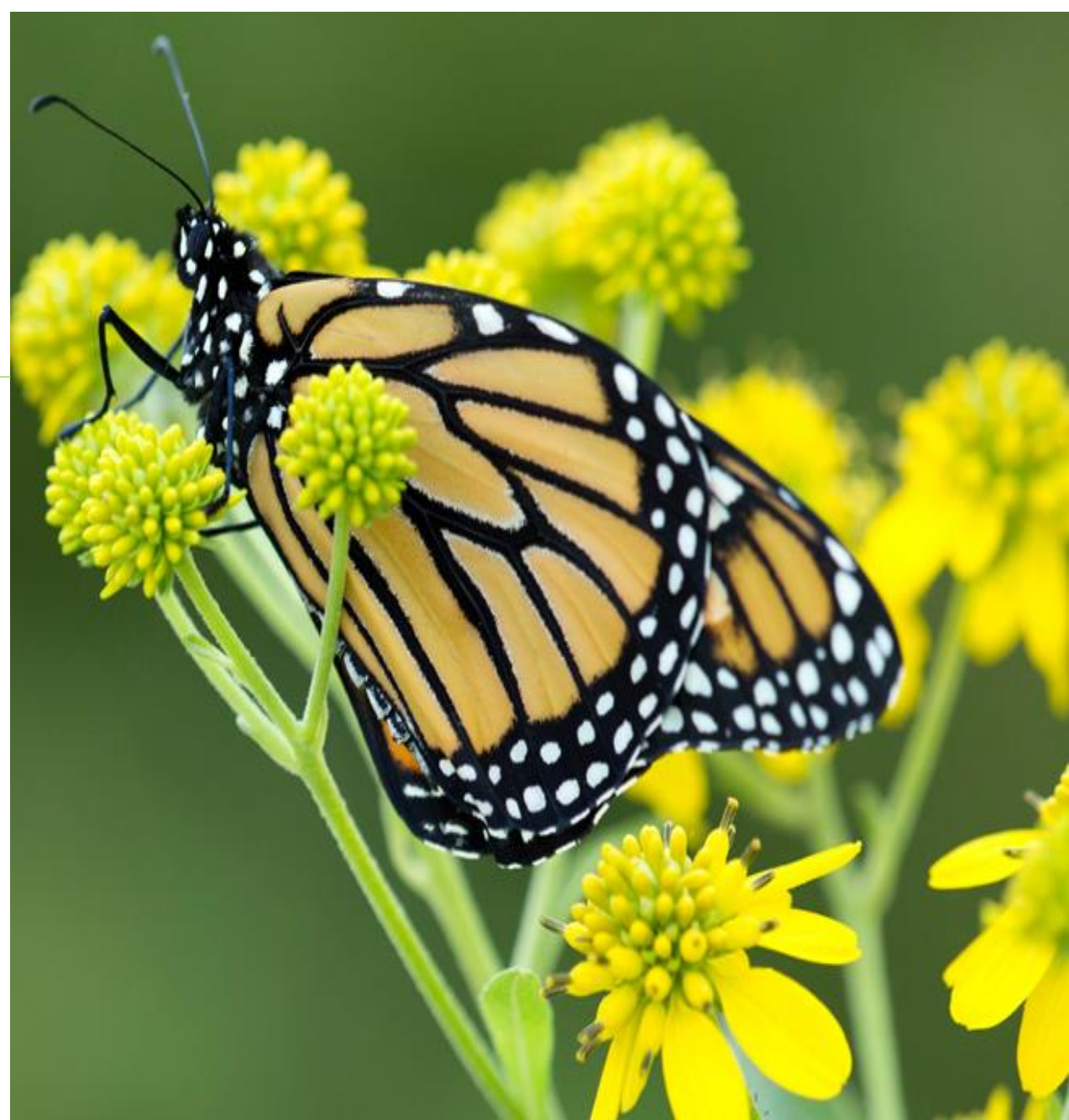
# Purpose | Catalyse Socio-Economic Transformation



**Commercial sustainability, with an inclusionary footprint in Saldanha Bay**

# Shared Responsibility

- Establish a resolution for conflicting interests between CBAs and areas designated for Industrial development around the Port of Saldanha
- The need to establish a strategic study to facilitate trade-offs between conflicting land uses
- The need to identify conservation areas to preserve ecological corridors and protect species
- To find ways to optimize and expedite industrial developments to unlock economic opportunities





**3**

**Value Proposition**



# Unique Value

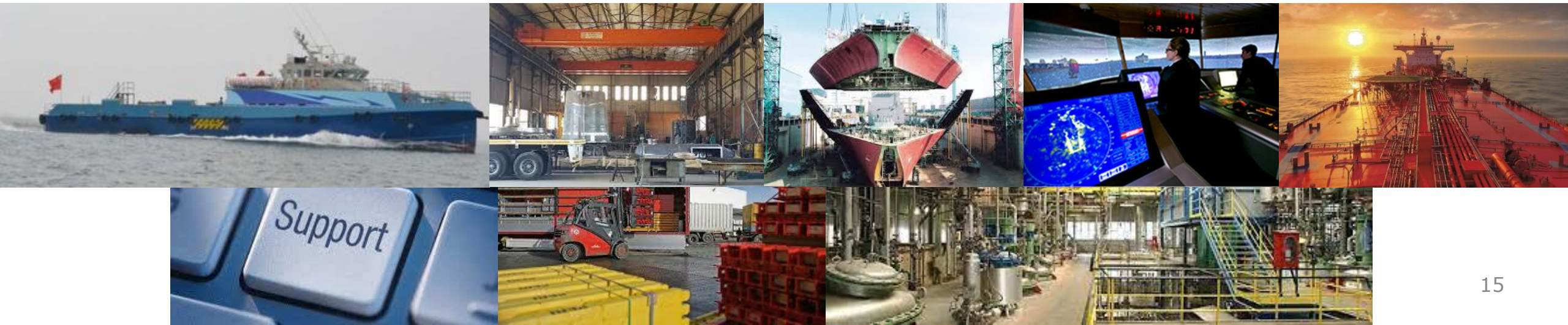
- 1<sup>st</sup> Freeport (SEZ + CCA + Port) in SA
- EAs for applicable activities
- Serviced sites through government funding
- Access to tenant infrastructure funding through SEZ Fund\*
- Market-related rentals, including full estate management functions
- Enabled operational efficiencies through CCA & SOPs
- Long-term and short-term occupancy welcomed, with array of land, facilities and properties on offer
- Professional business relationships with various government authorities
- Extensive network of business contacts & diverse tenants
- An organisational environment committed to enabling durable and greater profitability for your business



# Resilient market reach

Our tenants provide products & services to a host of different clients:

Energy / heating	Emergency maritime response services	Maritime defense and surveillance	Fishing	Navigation	Logistics	Maritime transport
Carbon and renewable energy production	Offshore and onshore field operations	Construction/Building	Chemical production	Ship/vessel building & repair	Manufacturing	Business support services



# Progress on Infrastructure Projects



## The Access Complex



Located in the hub of the Freeport, the AC offers **A grade offices** for business professionals in the Energy & Maritime industry.

The AC offers businesses & individuals an excellent location, as well as:

- Secure, private offices for small- to medium-sized companies for CCA & normal operations
- Flexible co-working spaces
- Comfortable canteen, coffee shop and common areas
- State-of-the-art meeting and conference facilities
- Ease of Doing Business Support Centre in collaboration with government departments
- Access to a network of Energy & Maritime industry support services
- Located 90 mins from Cape Town
- 2,100m<sup>2</sup> flexible GLA, with ample client parking



# Project Leasing Facility

---

The PLF is 8 ha of prime **common-user laydown area** in the CCA in the port, with excellent connections to major road networks that allows for transportation of heavy goods into the hinterland.

The PLF offers project-owners:

- Short-term monthly leases
- Fully serviced laydown area
- Dedicated wash bay to clean vehicles and equipment
- Established relationships with both public and private sector service providers
- Streamlined, easy to understand investor procedures
- Support to access CCA incentives

# Progress on Infrastructure Projects Continued

---

## ALL HVAC facility



Business operates by producing All Heating Ventilation and Air Conditioning equipment

Construction project will be complete by June 2021

Construction project spend ~R67 million



# Progress on Infrastructure Projects Continued

## WCCP facility



WCCP is a facility that does corrosion protection through blasting and painting steel

Their building is 1000m<sup>2</sup>

They have been operating from an outdoor field, which is their business when inclement weather prevails

Construction project spend ~R18 million



# Progress on Infrastructure Projects Continued

---

- Internal engineering services (water, sewer, electricity and roads) at the IDZ north and in the Port
- Upgrade of the Saldanha Bay WWTW
- Extension of the Besannsklip reservoir
- Construction of link bridge between IDZ north and south

# Infrastructure | Summary Slide

- Value of the Projects | **R742 mil SEZ grant funding**
- Overall value & % spend | **R464 mil** have been spent up to end of June 2019, which is at **63%** of the R 742 mil SEZ grant funding
- Value & % spend of Localisation | **R168 mil** have been spent up to end of June 2019





**4**

**Local Skills and  
Enterprise  
Development**

# Development Programmes

## Skills Development

- Sustainable skills supply pipeline built since 2013, with accredited, local training service providers
- Established sound relations with SETAs, DHET, DTIC & DEDAT
- Broadening of the local skills available within the SBM area
- Investor & tenant skills development support in place

## Objectives

- Strategic link to the local community
- Maximizing local content
- Analyze investors workforce & supply chain demands
- Access funding & resources
- Implement demand-led skills, enterprise, development & contractor development interventions
- Build local research, development & innovation capabilities

## Enterprise & Contractor Development

- Development & broadening the competence levels of local enterprises & contractors
- Established sustainable oil & gas & maritime awareness & advocacy
- Implemented in-depth oil & gas & maritime local business readiness assessment
- Significantly increase local contractor spend since 2016

# Achievements



## Skills Programme

R37M fundraised from SETA's  
520 learners  
trainers annually  
in accredited  
training programs



## Enterprise Development

Supplier  
Development,  
GROW-NET,  
TOGASI, O&G  
Readiness  
Programme for  
SMMEs



## Contractor Development

Supports the  
SBIDZ  
Infrastructure  
Projects (e.g. pilot  
fencing project)



**5**

**Innovation Campus**

# Innovation Campus Saldanha Bay

The Saldanha Bay Innovation Campus is to be a vibrant, inclusive and globally competitive innovation cluster in the South African maritime industry.

01

## Why are we building an innovation campus?

The leading question was fairly simple: How do we create a thriving, inclusive and resilient maritime industry?

After studying renowned oil, gas and maritime regions around the world, the answers became increasingly clear.

Although some oil, gas and maritime SEZs are surviving without a supporting research, development, and innovation (RD&I) capability, the ones that thrive have clusters that drive innovation. These thriving SEZs are cutting-edge knowledge centres that continue to create and seize opportunities, and they do so sustainably, effectively, and inclusively. They are able to rapidly respond to shifting global trends and continue to find new ways to solve industry problems and remain globally competitive.

We understand that economic growth and job creation is only sustainable if it is competitive, and that although innovation increases competitiveness, it is only sustainable and effective when it is collaborative. So the SBIDZ Innovation Campus is a substantial value add to the SBIDZ, the energy and maritime industry it serves, and the community in which it exists.

02

## What have clusters around the world taught us?

Successful clusters benefit from:

- Active involvement from government, industry, academia and the community,
- Ongoing collaboration and co-creation,
- A highly educated and competent workforce, and
- An independent and trusted brand built through demonstrated wins.

Notable examples:



Oil and Gas Technology Centre (OGTC) in Aberdeen, Scotland was established in 2016. In its first year, it co-invested US\$47 million in 72 projects, some of which

demonstrating significant cost savings for industry. It has since co-funded 230+ projects.

**PIER71**

Port Innovation Ecosystem Reimagined 71 (PIER71) was established in 2018 by the Maritime and Port Authority of Singapore and the National University of Singapore. It runs an annual Smart Port Challenge since 2017 to identify maritime technology start-ups to incubate and accelerate.

03

## What can you expect to see over the coming months?



### Ongoing engagement

To ensure the Innovation Campus continues to meet industry and community needs.



### Industry problem sessions

A platform where stakeholders can share and engage on some of the key challenges present in their line of work.



### Clustering and collaboration

Identifying opportunities for synergistic collaboration which can be facilitated and supported through innovation events coordinated by the SBIDZ Innovation Campus. ... and much more.

We would like to engage with you further to discuss the Innovation Campus, understand the functions and activities you would like to see it perform, and to answer any questions you may have.

Please click the link below to schedule a time most suitable for you to engage with us.

[CLICK HERE](#)



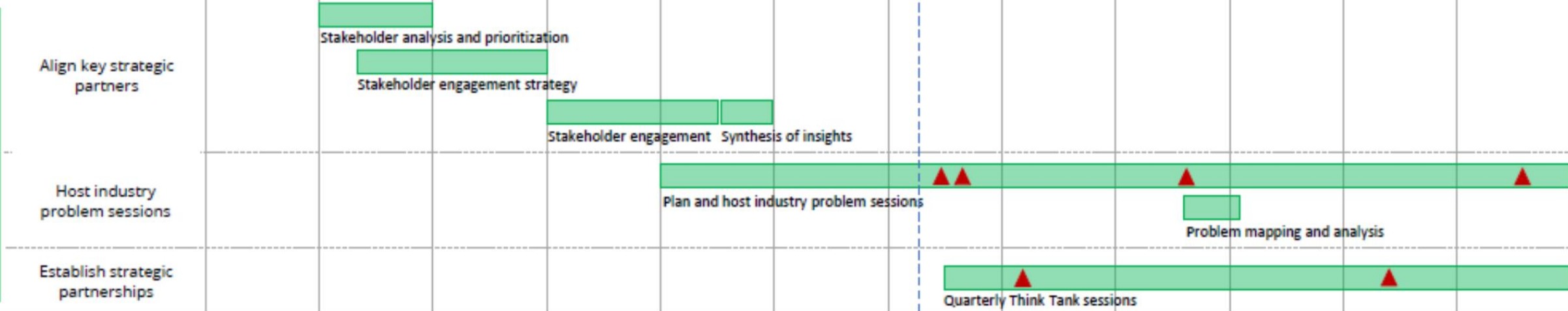
# 12 month workplan



May 2020 June 2020 July 2020 Aug 2020 Sept 2020 Oct 2020 Nov 2020 Dec 2020 Jan 2021 Feb 2021 Mar 2021 April 2021

Results framework

## 1. Stakeholder interactions



## 2. Innovation projects

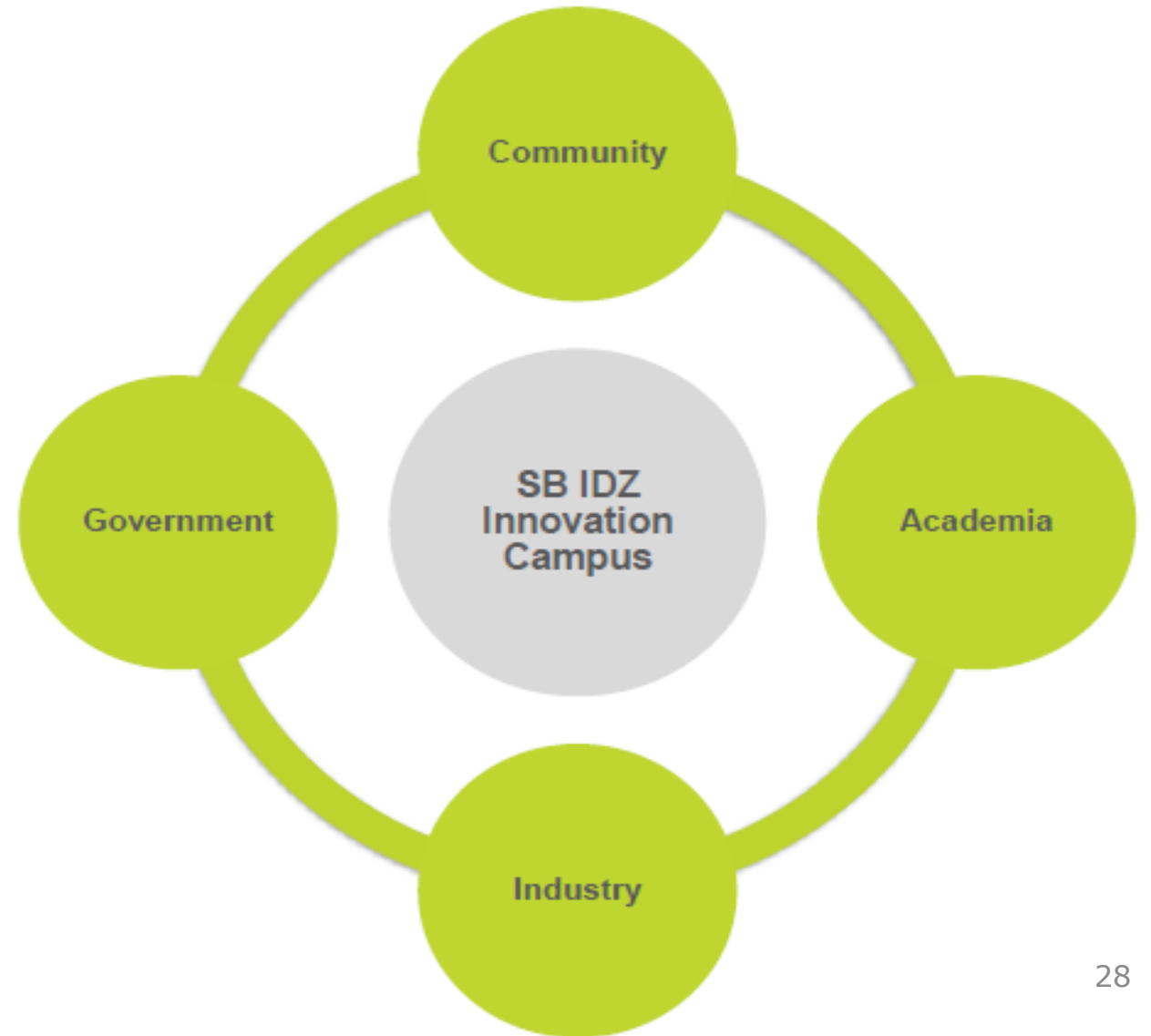


## 3. Organisational design





# Innovation campus | Stakeholder grouping

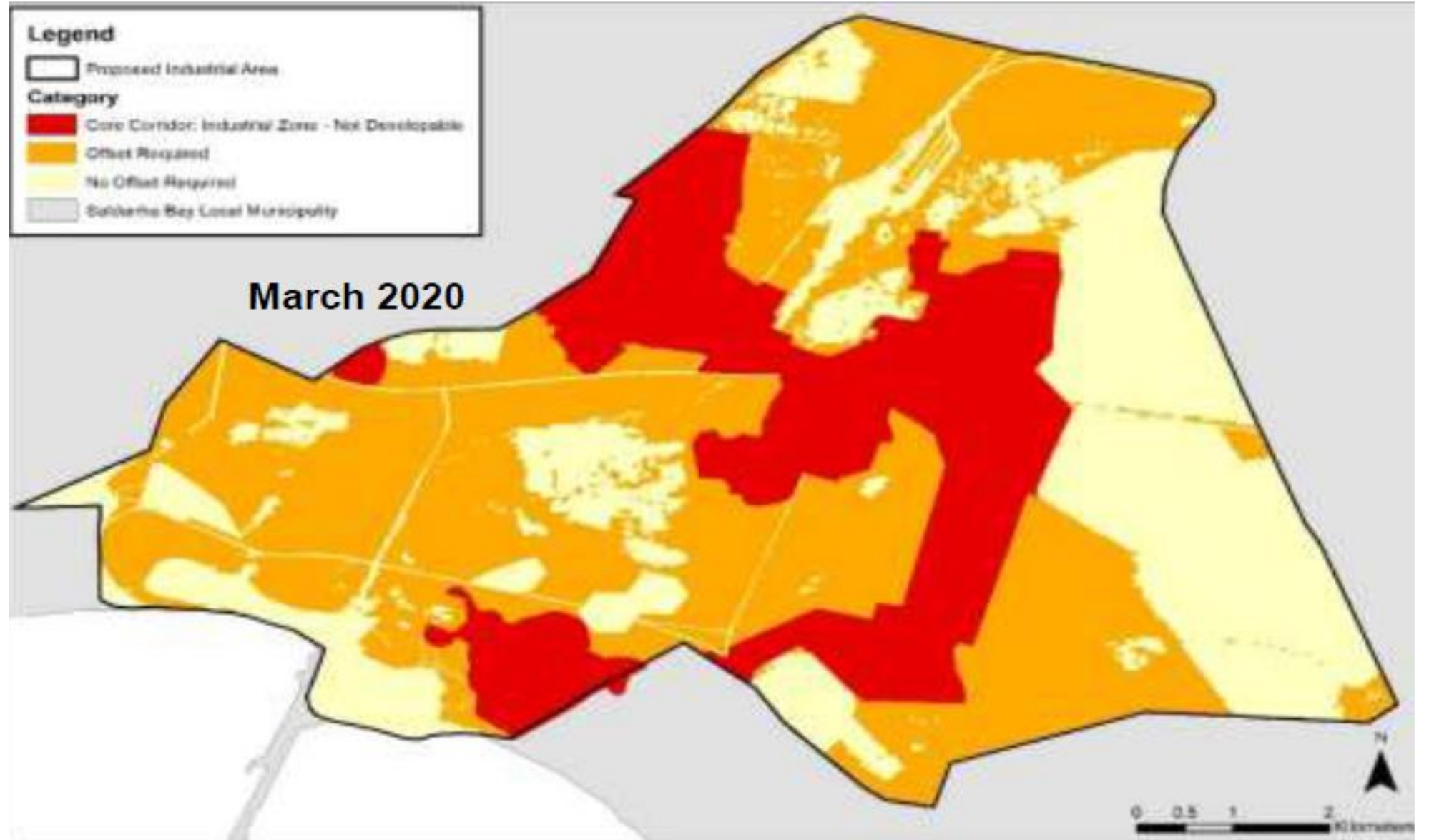




**6**

**SSOS: Way forward**

# CRITICAL BIODIVERSITY AREAS



# Short term environmental plans

- We have EA's for the following activities
  - Transportation and Storage of hazardous fuels
  - For construction of top infrastructure and bulk services
- Obtaining Air Emissions Licences for tenants
- Obtaining Waste Licencing for tenants
- Each tenant will have their own EMP
- The zone will have a holistic EMP



# Environmental challenges

Energy

Water

Waste

Air emission

Noise pollution





## Long term solutions| How to achieve holistic ecological regeneration?

- Create connectivity of fragmented biodiversity habitats
- Identify areas to mimic natural ecosystems and link areas of conservation (offset receiving areas)
- Study the Greater Saldanha area holistically and design a framework for the region
- Developing institutional and transactional mechanisms for securing and funding offsets and acquisition of offset receiving areas
- Formulate design principles in support of natural habitats
- Give an indication of tradeoffs between the various stakeholders
- Create a shared vision – on 26 Nov 2020 the SBM, WCDM and SBIDZ will sign MOU to initiate a Biomimicry study in support of preserving natural habitats while unlocking economic opportunities



# Shared Mandate

*Finding synergy in economic development without compromise and continued preservation of the environment is a balance that needs to be maintained as a social and environmental responsibility by the SBIDZ-LC with all affected stakeholders. This imperative demands a joint effort to think beyond constraints and develop ecological solutions driven by an understanding of the limited resources in which we operate, yet realizing the opportunity to unlock the employment potential in key sectors.*





SALDANHABAY  
INDUSTRIAL DEVELOPMENT ZONE

Thank you

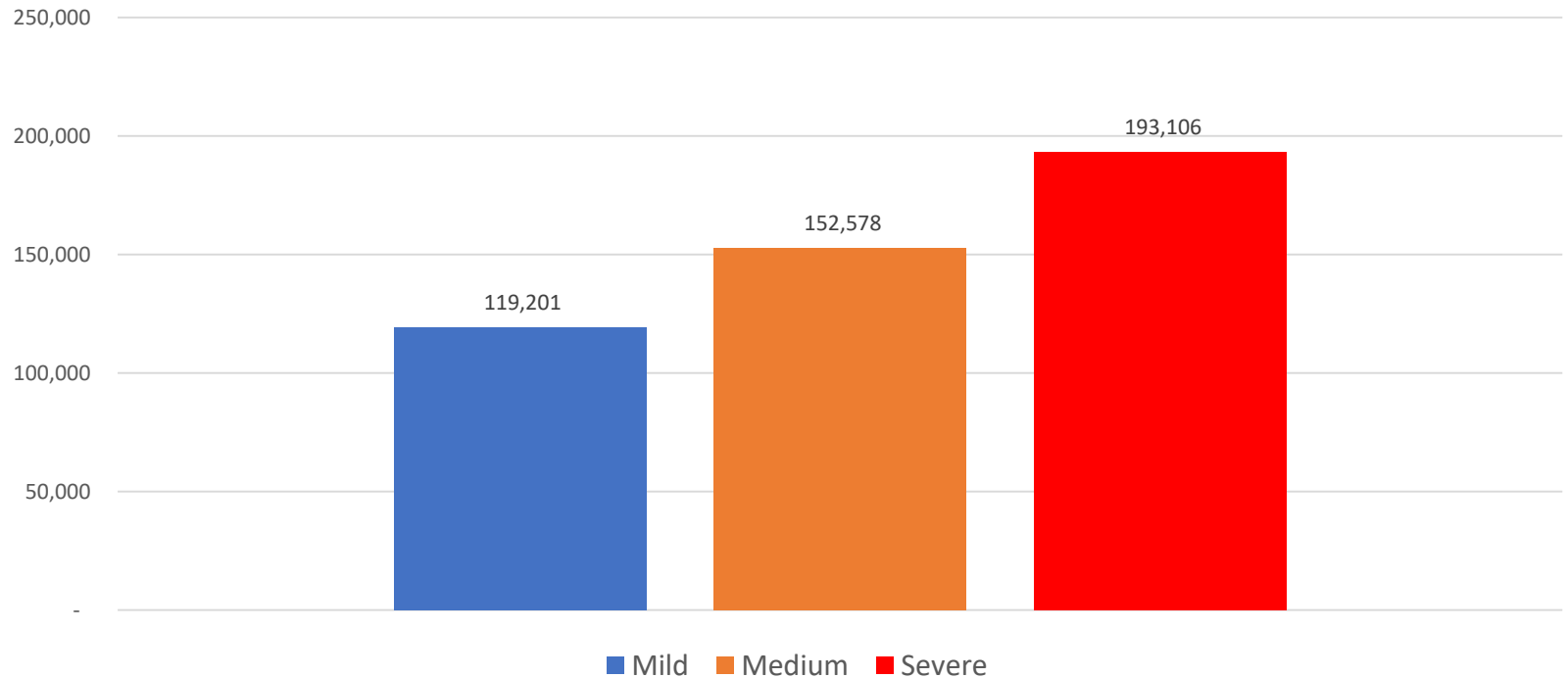


Western Cape  
Government

# RECOVERY PLAN FOCUS AREA: JOBS

October 2020

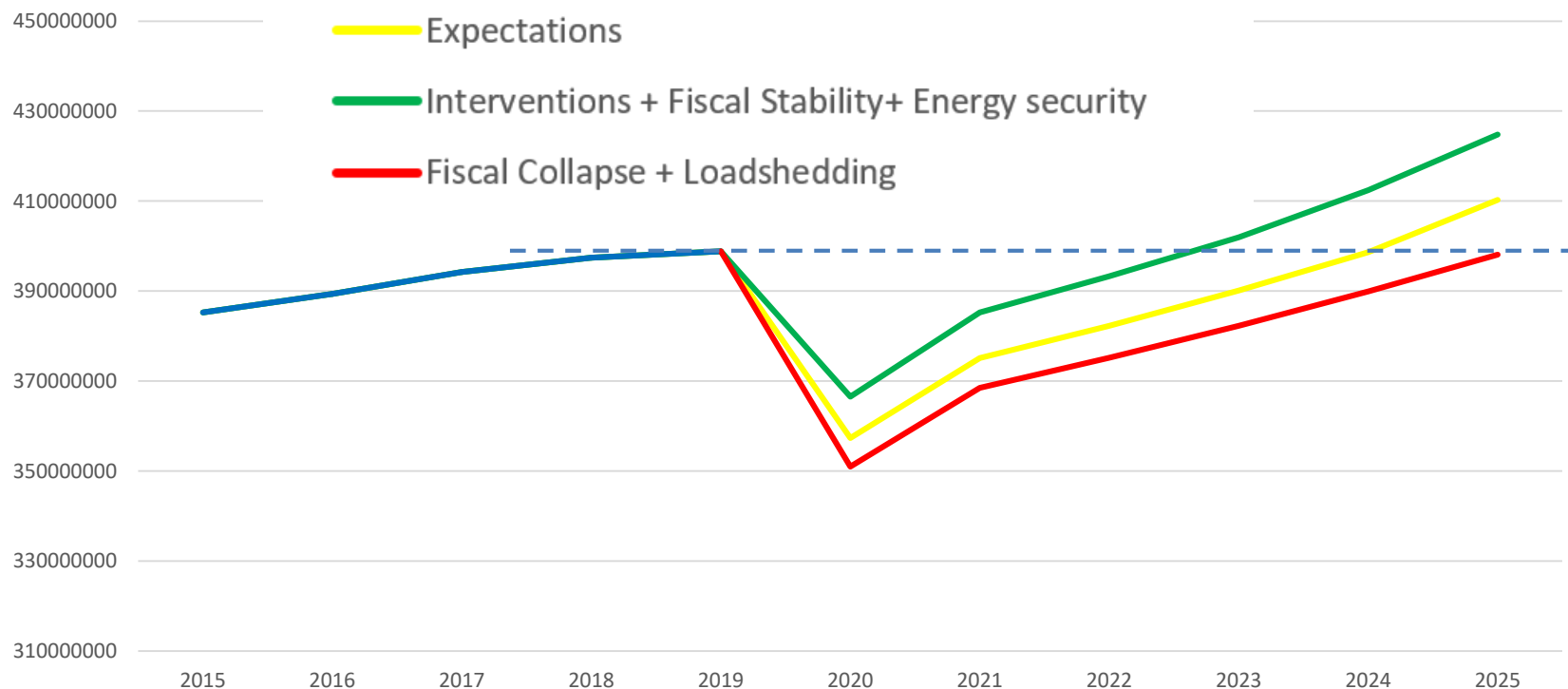
# Introduction: Jobs context- Forecasted employment losses in scenarios for 2020, Level 1



Source: DEDAT

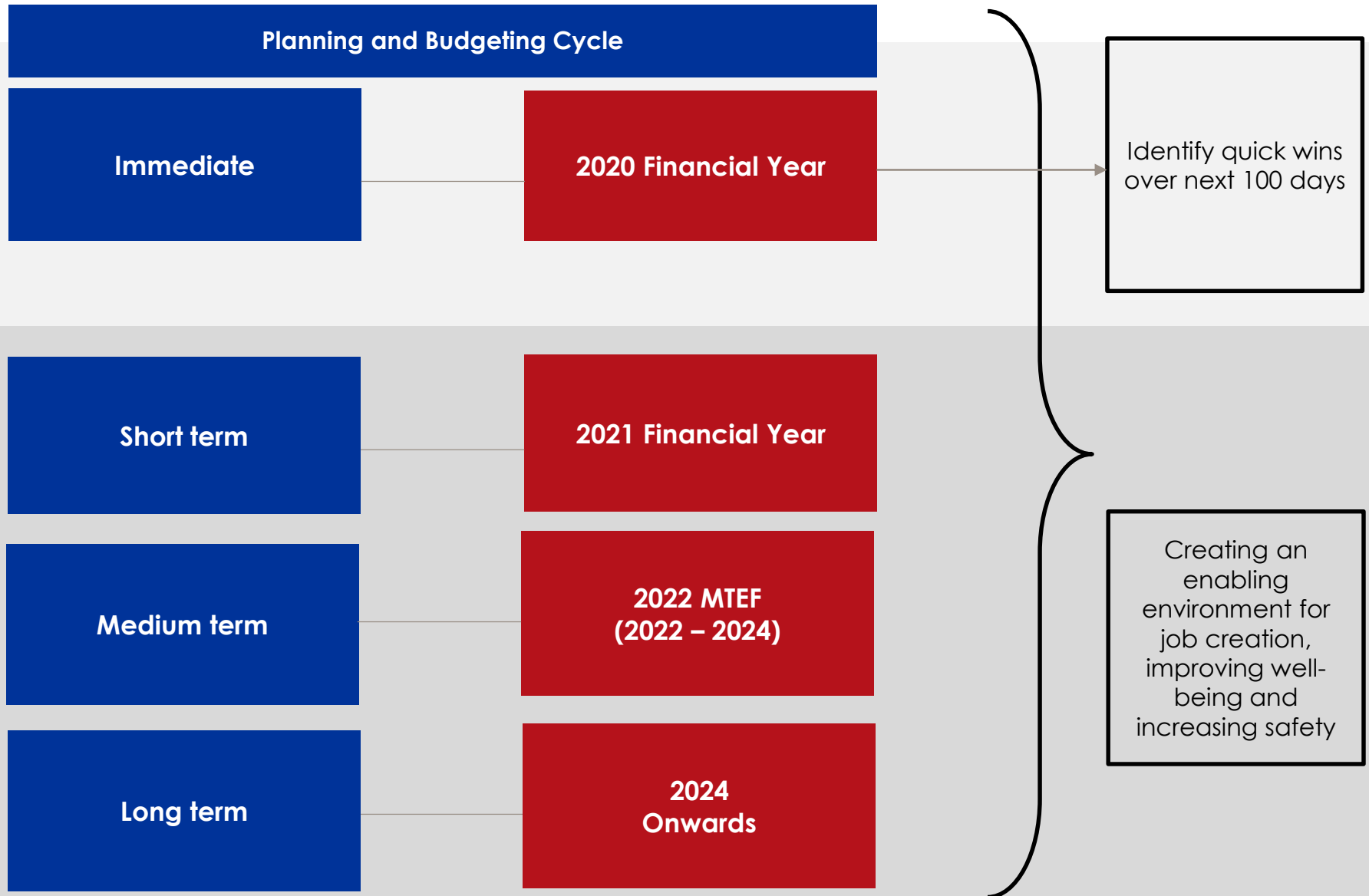
# Introduction: Longer-term goal is to support recovery

## GVA projections for the WC for various growth paths



Source: DEDAT

# Introduction: Timeframes for recovery plan implementation



# Key focus areas and initiatives for the Priority

# Economic Recovery Plan of the Western Cape



## Accelerate Ease of Doing Business

Number of Jobs created:  
2 853

2021/22 Budget:  
R 7.5 million



## Boost Investment and exports

Number of jobs created:  
12 087

2021/22 Budget:  
R 336.1 million



## Boost Infrastructure

Number of Jobs created :  
29 025

2021/22 Budget:  
R 7.251 billion



## Support SMMEs and the Informal

Number of Jobs created:  
6 190

2021/22 Budget:  
R 264.2 million



## Scaling up work opportunities and skills for people without jobs

Number of jobs created:  
31 091

2021/22 Budget:  
R 319.2 million



## Economic Resilience

Number of Jobs created:  
696

2021/22 Budget:  
R 128.8 million

# Who is responsible?

**JOBS: HOD LEADS – DEDAT & DTPW**  
Support departments: DoA, WCED, DoH, DEA&DP, DoCS

**Immediate Relief & Stimulation**  
**'Jobs Now'**

## **Enabling Private Sector Investment & Recovery**

Enabling private sector investment  
– Ease of Doing Business

Boosting private sector investment

Supporting vulnerable sectors

Enabling resource security (energy & water)

**Lead: Jo-Ann Johnston**  
**Support: Mogale Sebopetsa, Chantal Smith, Gerrit Van Schalkwyk & Nozuko Zamxaka**

## **Public Sector Jobs Stimulation**

Scaling up work opportunities for people without jobs

Boosting infrastructure investment

**Lead: Chantal Smith**  
**Support: Mogale Sebopetsa, Graham Pause & Gerrit Van Schalkwyk**

## **Communications to boost confidence**

Consumer confidence

Business confidence

**Lead: Russel Bruton, Fran Higham & Ntomboxolo Makoba-Somdaka**

**Departments of the Premier, Local Government and Provincial Treasury**



# Ease of Doing Business

Entity/Department	List of Projects	Total Jobs
DOA/DHS, Water and Sanitation	Unlock water license applications (such as MWT Investments and departmental projects)	<b>7295</b>
DEDAT	Deeds Backlogs	
DEDAT	Port Efficiency	
DEDAT/DoEL	UIF payments facilitated	
DEDAT/DOH/ACSA/Garden Route DM	George Airport (Tourism)	
DoA	Country of origin ZA-Certificates	
DoA	Residue testing for agri products	
DCS	Liquor license fast tracking	
DEDAT	MV Garieb marine vessel	
DoH	Medical vehicles licensing fast tracked (e.g private ambulances)	
DoH	Medical facilities licensing fast tracked	
DTPW	Abnormal Load permits	
DEA&DP	EIA enablement	
DTPW	Applications for the Public Transport Regulation System developed to ease applications for transport operating licenses	
DTPW	Utilization of technology to maximize weighbridge efficiency and heavy vehicle flow	
DTPW	Discussions underway with RTMC around the development of online vehicle licenses renewal capabilities	
DCAS	Improvements of the timeframes to process HIAs, Notification of Intent to Develop, & catalytic development applications	

# Boost Investment

Entity/Department	List of Projects	Budget (Rands)	Jobs 100 days	Jobs 31 March 2021
WESGRO	AMDEC (Harbour Arch)	R 59 964 800	600	
WESGRO	Stellenbosch Bridge			700
WESGRO	Property Investor			50
WESGRO	TERACO Data Centre			50
WESGRO	Manufacturer			250
WESGRO	Sanitary Manufacturer			50
WESGRO	Technology Firm (Phase IV)			50
ASEZ	Bicycle Manufacturer		R 29 161 000	
ASEZ	Azure			25
ASEZ	Crest			25
ASEZ	Quantum			25
ASEZ	Goldwind			300
ASEZ	Saalbio			50

# Boost Investment

Entity/Department	List of Projects	Budget (Rands)	Jobs 100 days	Jobs 31 March 2021
SBIDZ	Corrosion Protection	R 42 566 000		18
SBIDZ	AllHVAC			50
SBIDZ	Offshore Supply base			300
SBIDZ	Logistics (AW)			100
SBIDZ	Aluminium Gas cylinder			55
SBIDZ	Vessel fabrication, Repair and Maintenance			88
SBIDZ	Engineering			20
DEDAT/DSI/TIA	Health Tech Cluster support: Biovac, test kits and other	R 0	0	100

# Supporting Vulnerable Sectors

Entity/Department	List of Projects	Budget	Jobs 100 days	Jobs 31 March 2021
DCAS	Relief funding -for artists and sports people	R 6 800 000	708	
DEDAT	SMME Covid-19 Relief Fund	R 27 000 000	400	
DEDAT	PPE Supplier Development	R 2 000 000		100
DEDAT / EDP	Community Economic Recovery Programme	R 2 000 000	150	
DEDAT	SMME Safety Toolkits	R 3 000 000		
DEDAT	Business Chamber Support Programme	R 1 000 000		
DEDAT	Compliance PPE Kits	R 1 000 000	250	
DEDAT	SMME Booster Fund	R 14 000 000	400	
DEDAT	Workplace safety	R 3 000 000		0
Wesgro	Tourism Domestic Campaign	R 3 000 000	2258	

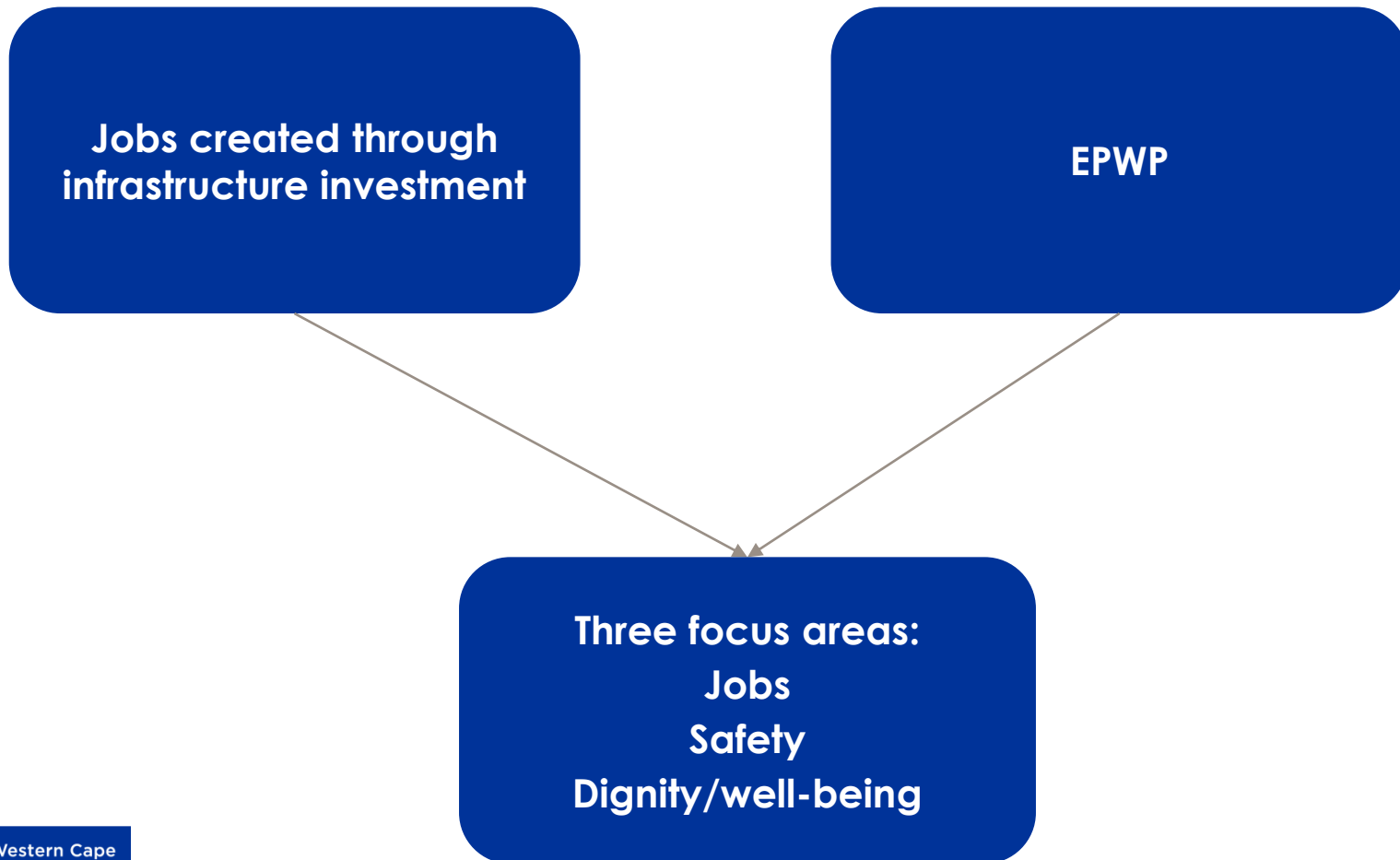
# Enabling Resource Security- Energy

Entity/Department	List of projects	Budget
DEDAT	Energy: new self generation (sub-utility scale)	R 17 700 000
DEDAT	Green Economy Ecosystem Support	R 7 300 000

# Public Sector Job Creation

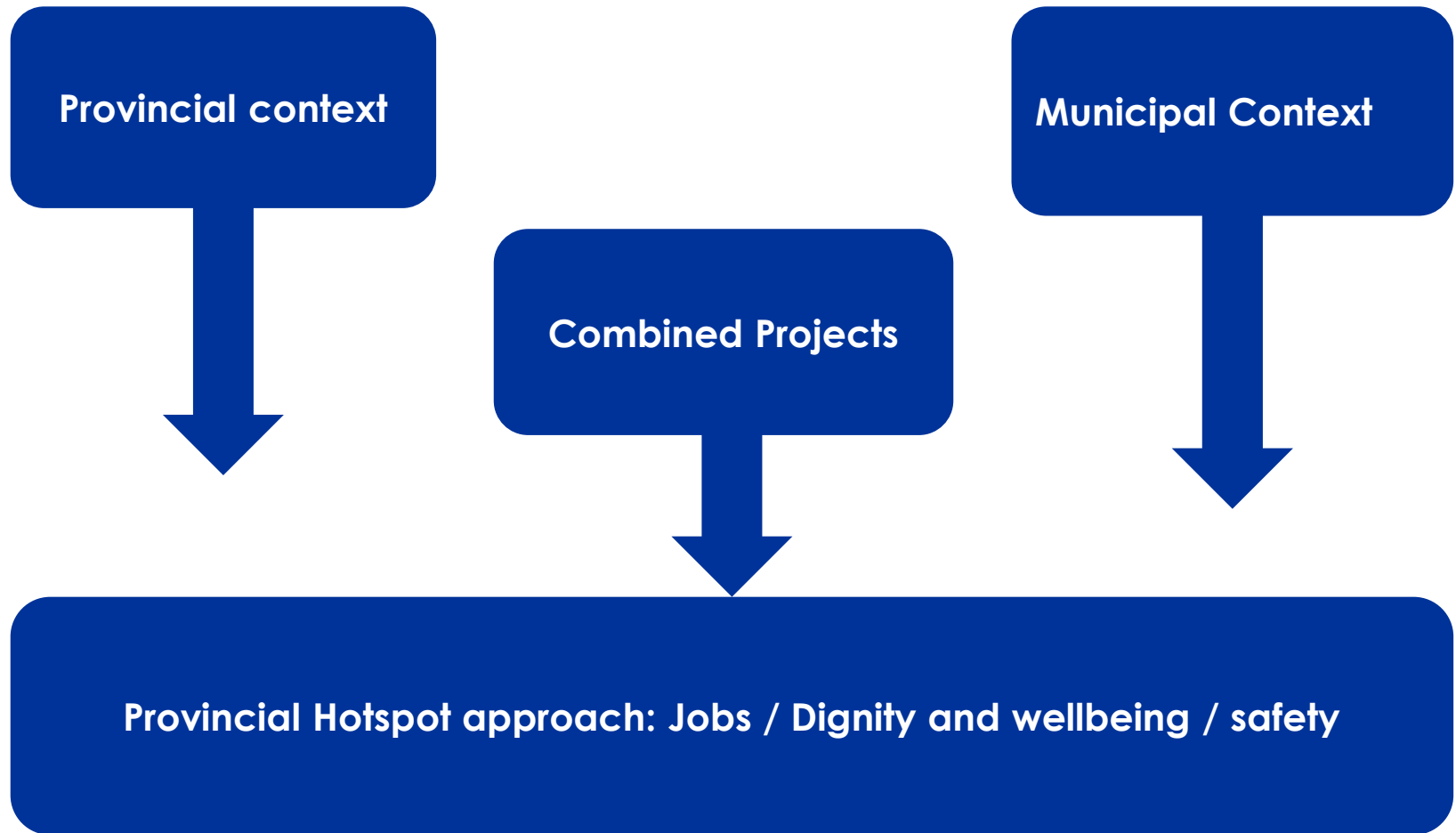
# Two prominent components to public employment

*Each contribute directly or indirectly to the three focus areas*



# EPWP: Public employment creation

*Meeting multiple objectives*





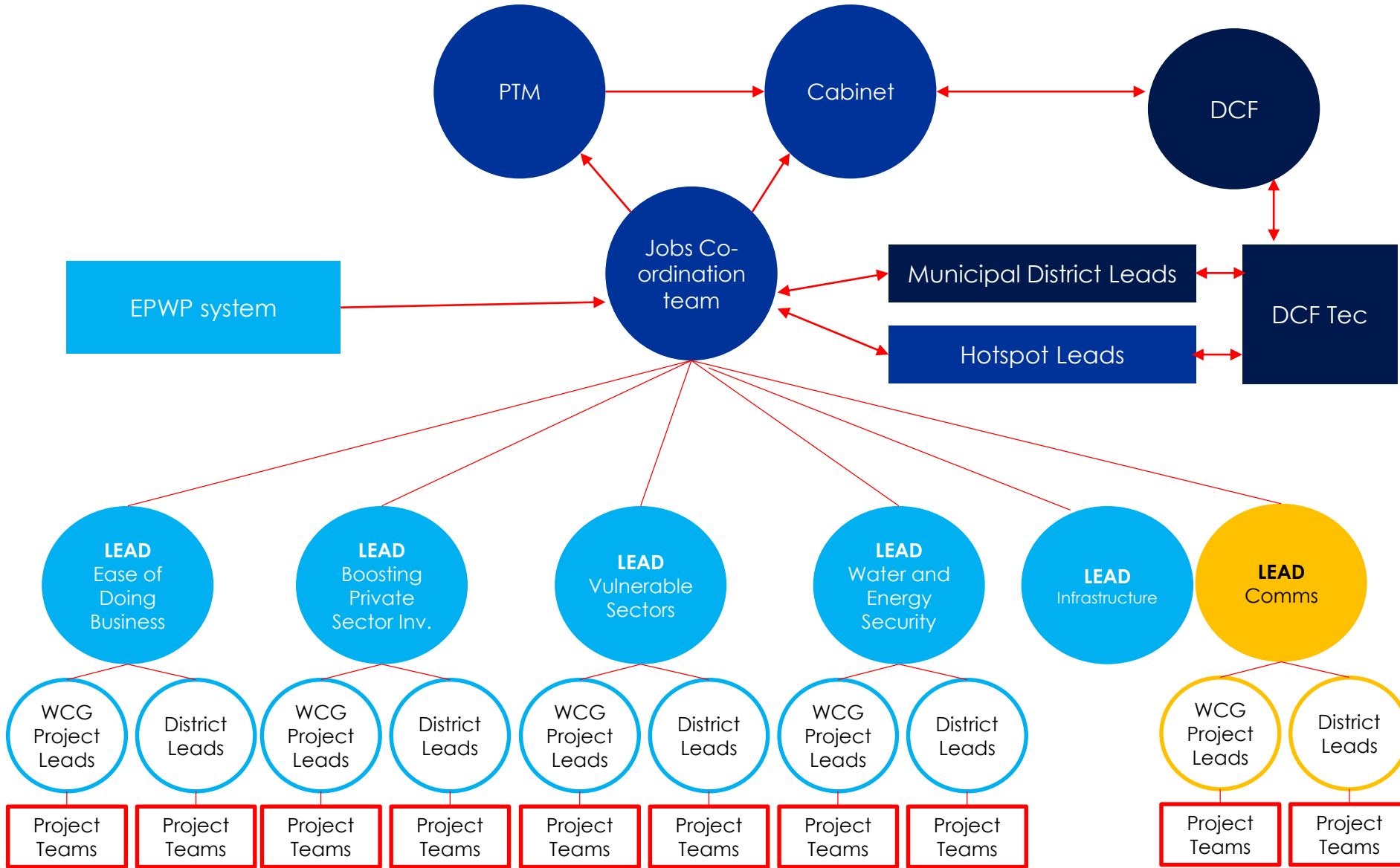
# EPWP: Summary of Active Projects

	Number of Projects	Work Opportunities Reported	Full Time Equivalents Reported
Municipalities	430	5 207	944
EAC Sector	35	555	158
Social Sector	29	1 808	549
Infrastructure Sector	8	523	110
Human Settlements		1 056	200
<b>Total</b>	<b>502</b>	<b>9 149</b>	<b>1 961</b>

**Work Opportunities:** Refers to paid work created on an individual on an EPWP project for any period of time within the conditions of the Code of Good Practice for EPWP.

**Full Time Equivalents:** Refers to one person year of employment. One person year is equivalent to 230 person days of work. The 230 days are effective days after subtracting provision for non-productive days in a year (e.g. leave, holidays)

Objective:  
Inform, unblock and support



---

Thank you