



Western Cape Government

Economic Development
and Tourism

Industrial Development in Saldanha Bay

Herman Jonker

26 Oct 2018

LAST YEAR





Western Cape Government

Economic Development
and Tourism

The West Coast Industrial Plan

Herman Jonker

20 Oct '17

Disclaimer: Government Official



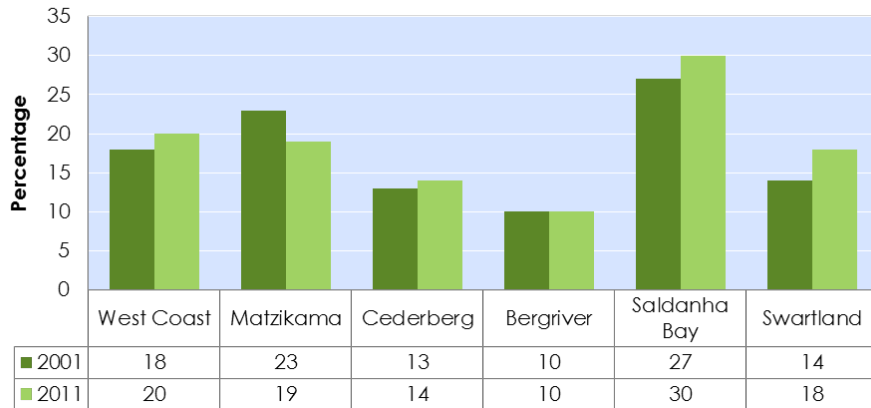
performance

expectations

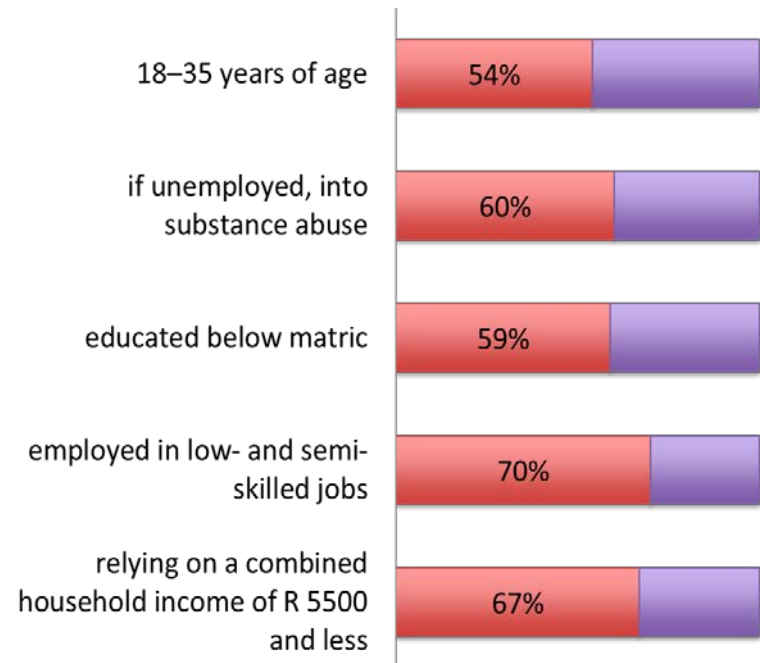
happiness

Challenge/Opportunity

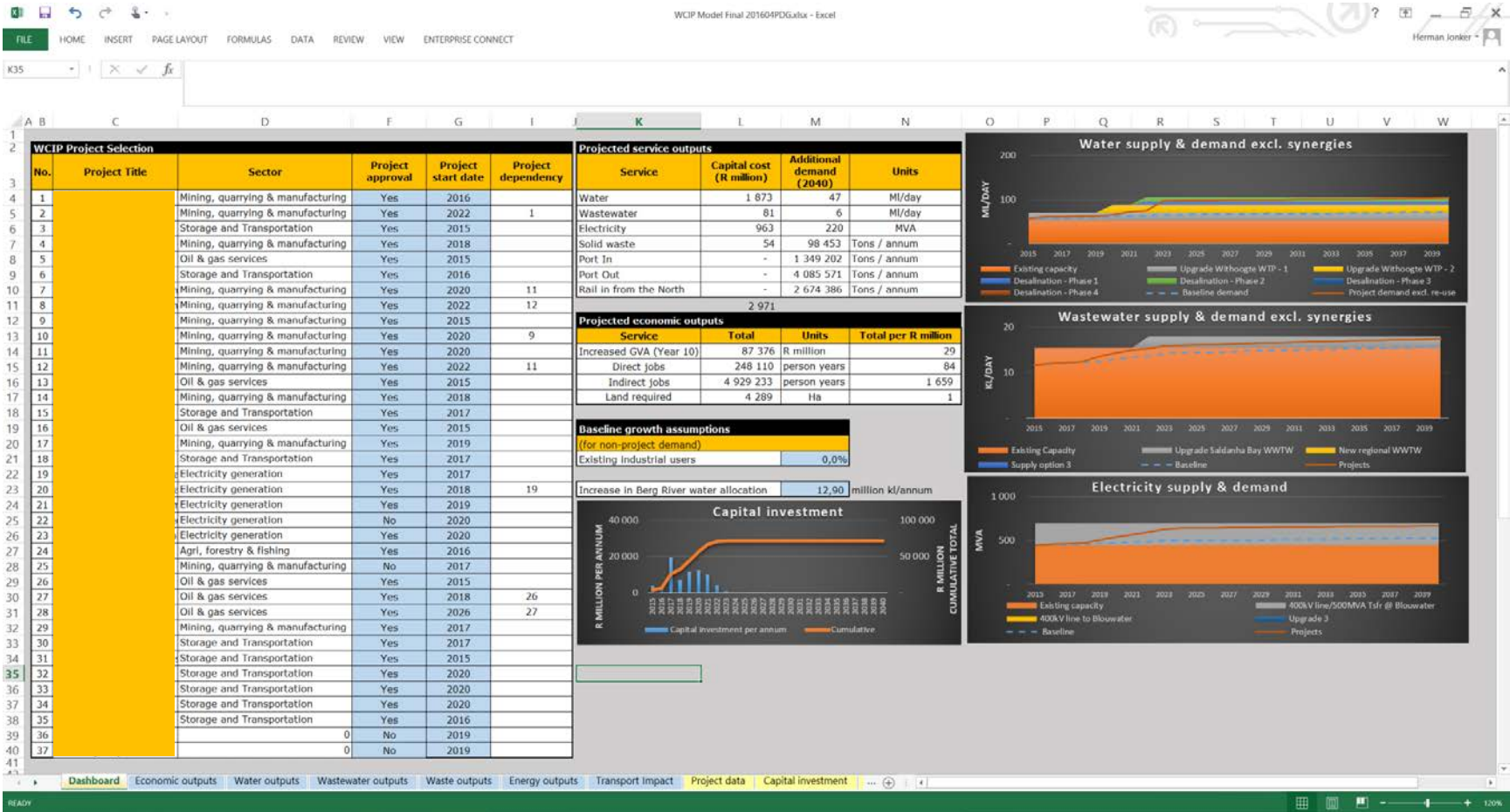
Youth Unemployment Rate (15-34yrs)



The majority of residents in the Saldanha Bay Municipality are:



Project Inventory – Model Dashboard





Investment Glimpse

2015 – 2018

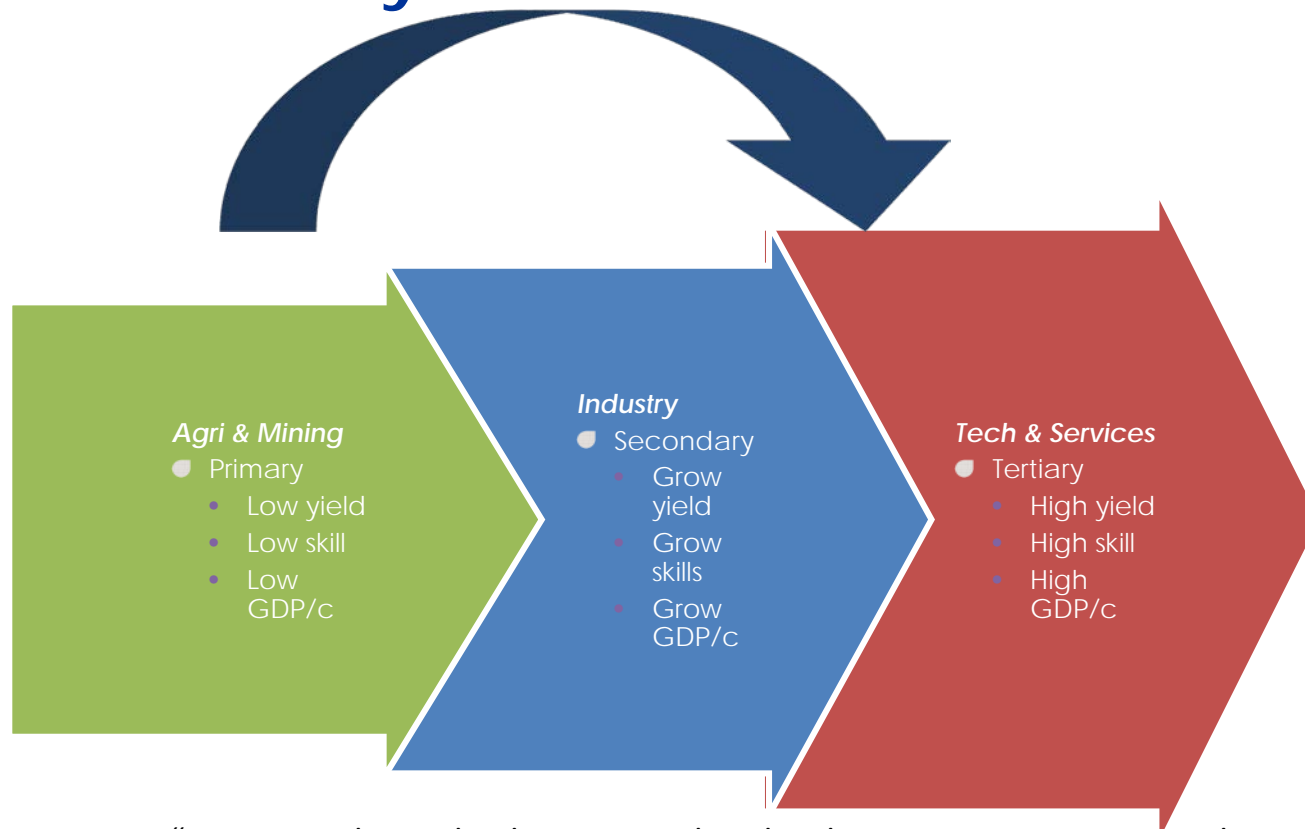
■ LPG Storage	R 1.5 bn
■ Minerals processing	R 1.4 bn
■ Roads & Bulk Infrastructure	R 550 m
■ Port infrastructure	R 300 m
■ IDZ internals	R 500 m
■ Bulk logistics	R 2.2 bn
■ Total:	R 5.35 bn

Industry: The Old and the New . . .



POTENTIAL !!

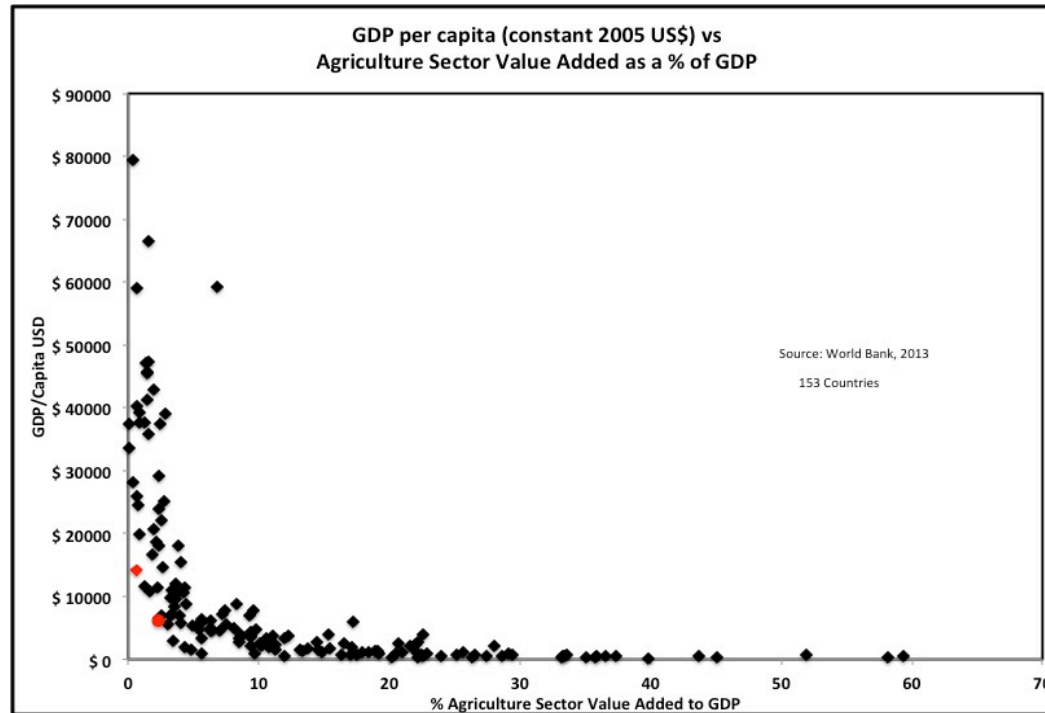
Why Industrialise?



“ . . . reject the misleading notion that developing countries can join the West by becoming post-industrial societies without having first been industrial ones.”

POTENTIAL !!

Why industrialise?



“ . . . reject the misleading notion that developing countries can join the West by becoming post-industrial societies without having first been industrial ones.”

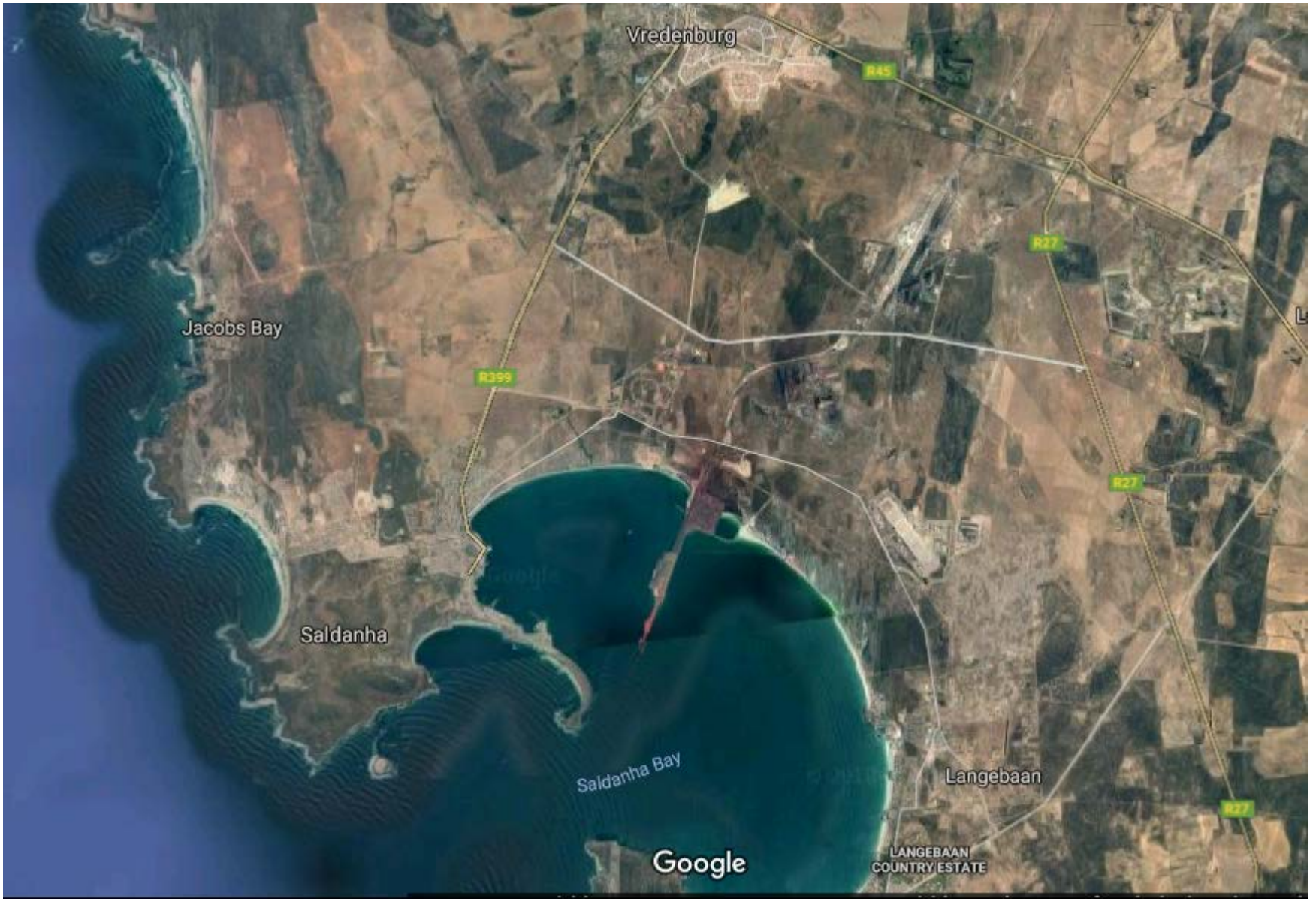
Is it really going to happen?

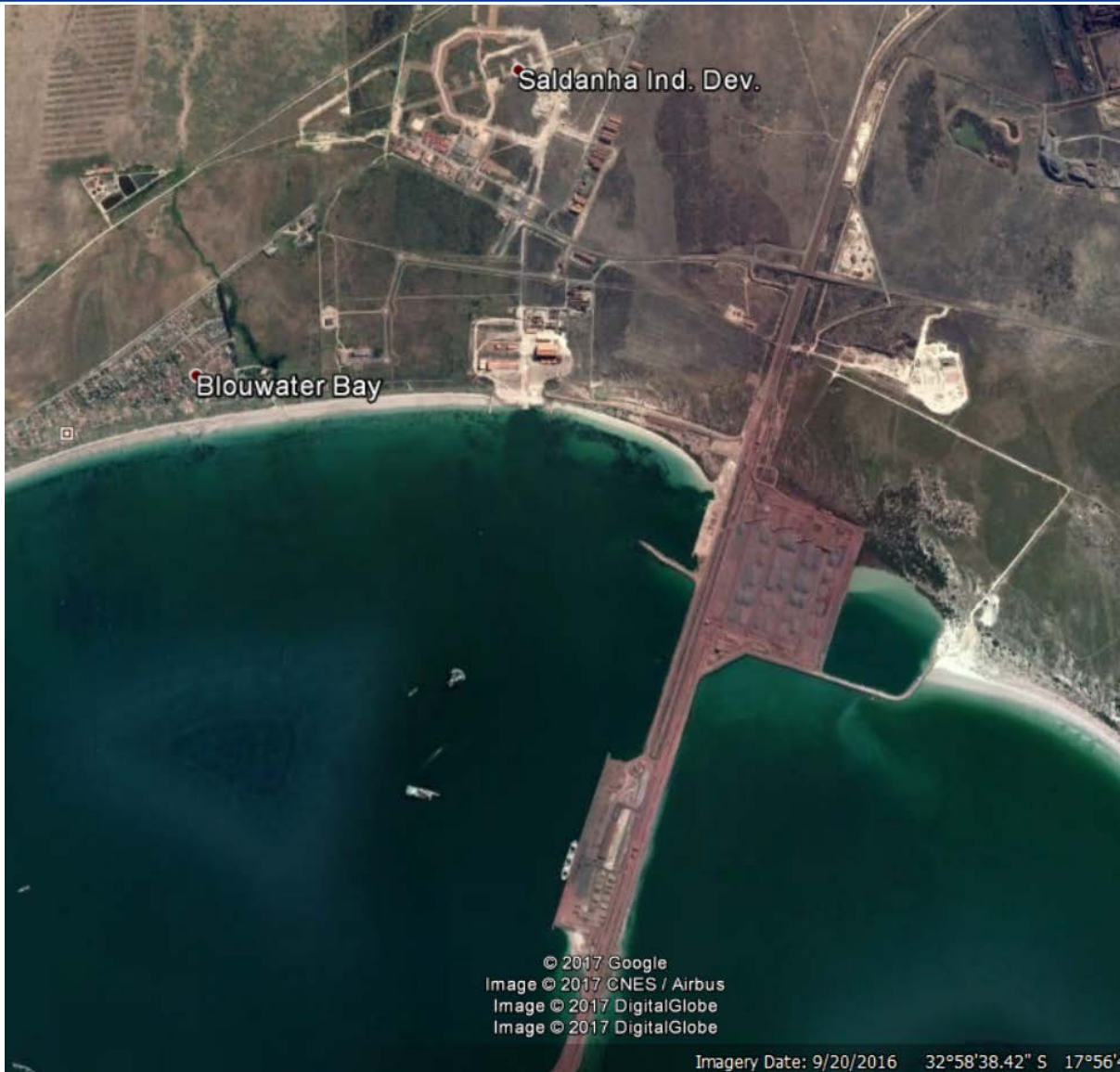


What will it take?



HOW DO YOU FEEL ABOUT . . ?





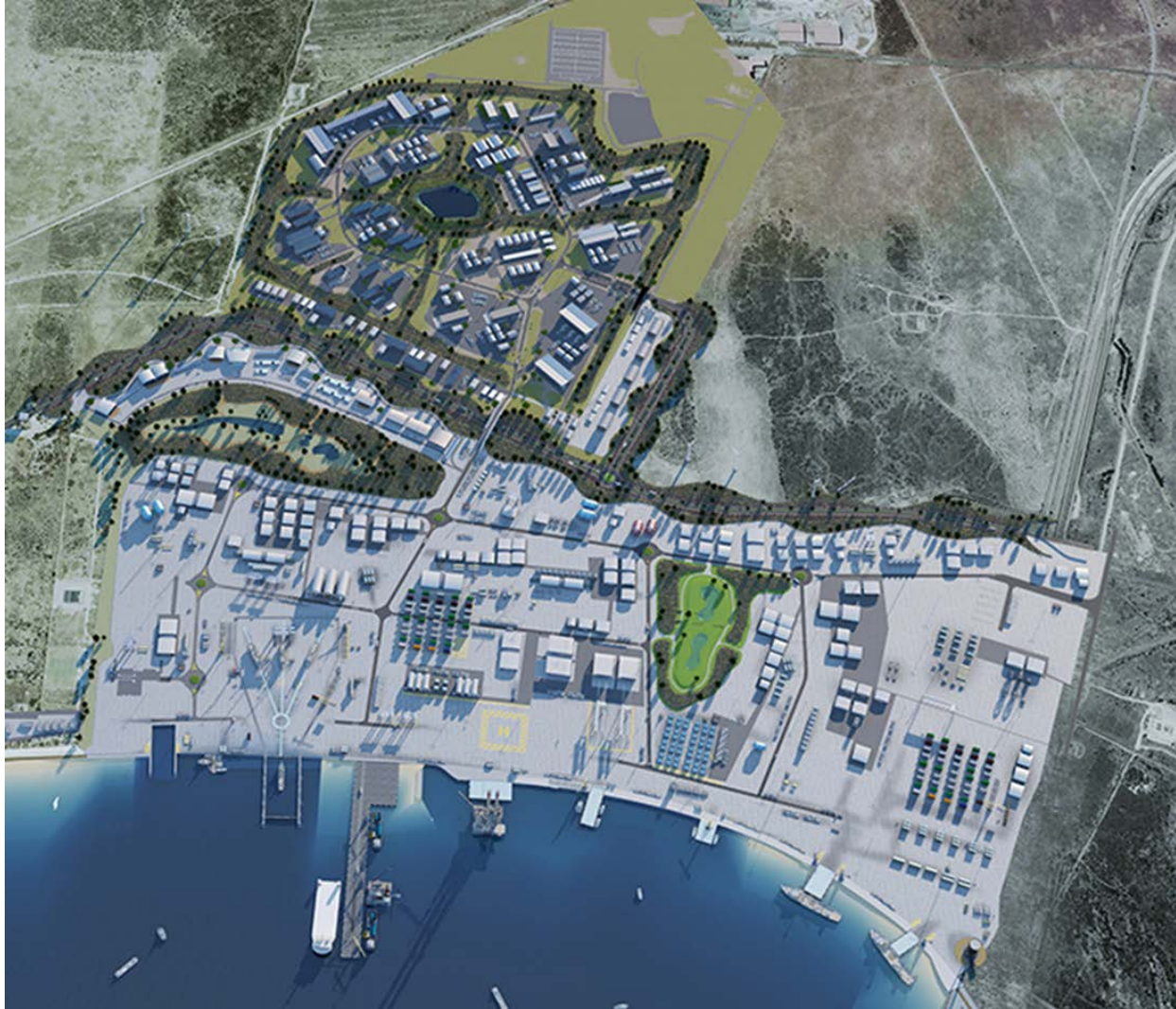


History of DEDAT in Saldanha

- **West Coast Investment Initiative (WCII)** in late 90's / early 2000's
- **IDZ application** in collaboration with **SBM** and **the dti** from in 2010/11
- **IDZ Infrastructure roll-out** from 2014
- **West Coast Industrial Plan (WCIP)** from 2015







**Western Cape
Government**

Transport and Public Works

REALITY CHECK

THE PRESENT

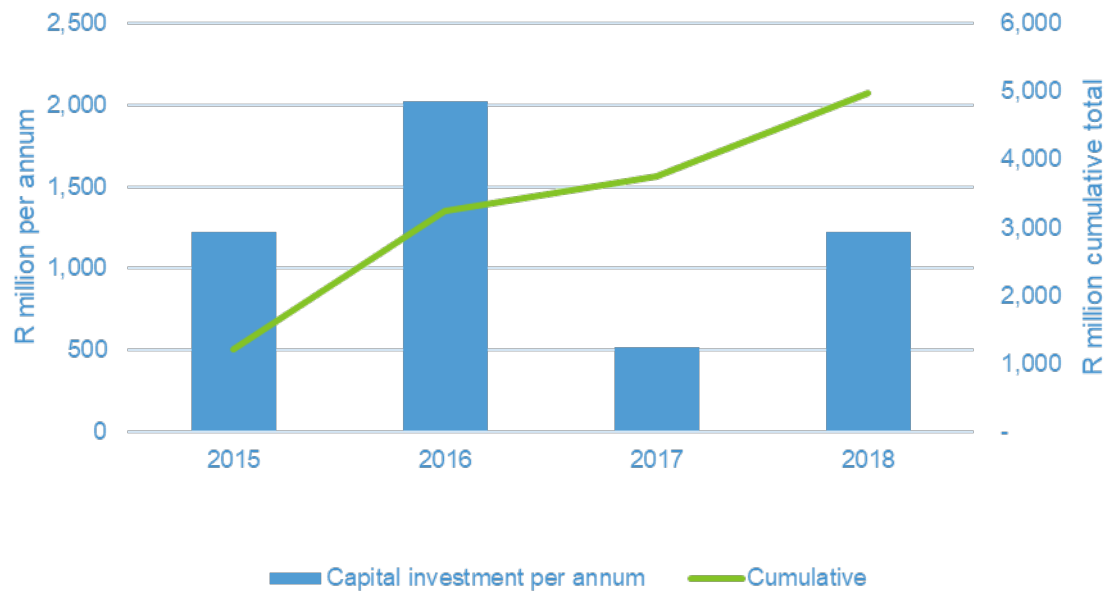
2011	100 000
2018	130 000 – 140 000

THE FUTURE

2011		100 000
2018		130 000 – 140 000
2028	(4%)	192 500
	(3%)	175 000
2038	(4%)	285 000
2038	(3%)	230 000

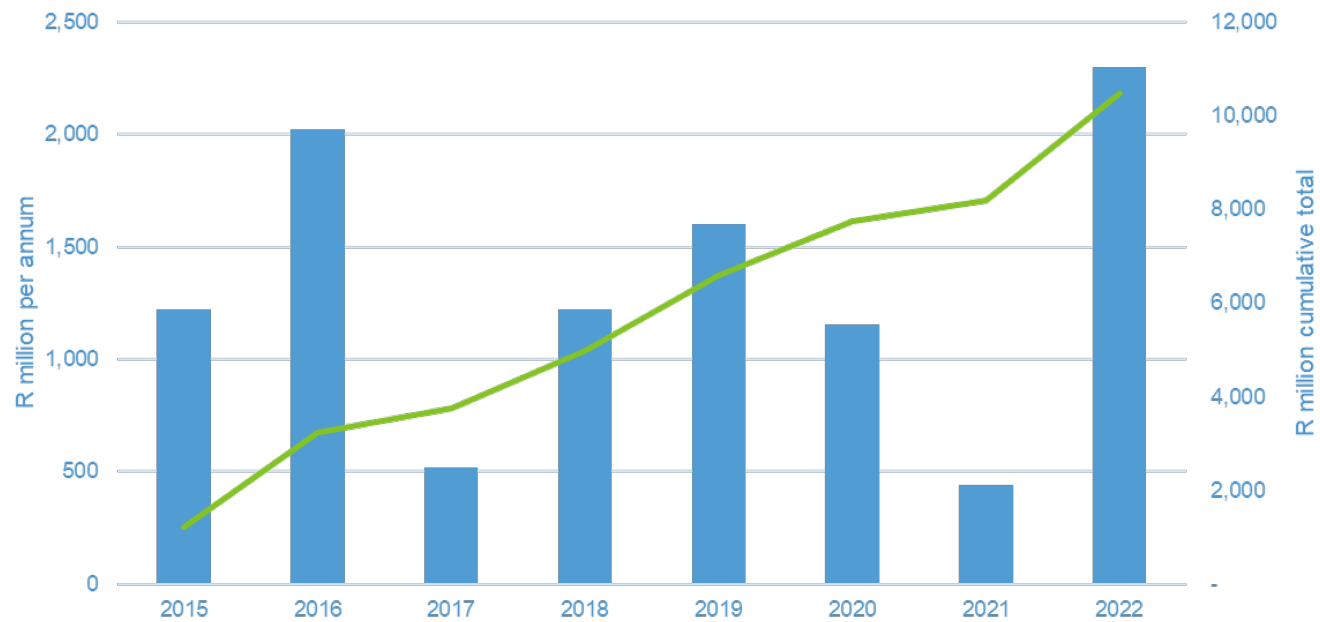
What has happened (REALLY!!)

Actual Investment Snapshot



What is happening

2018 Realistic Forecast



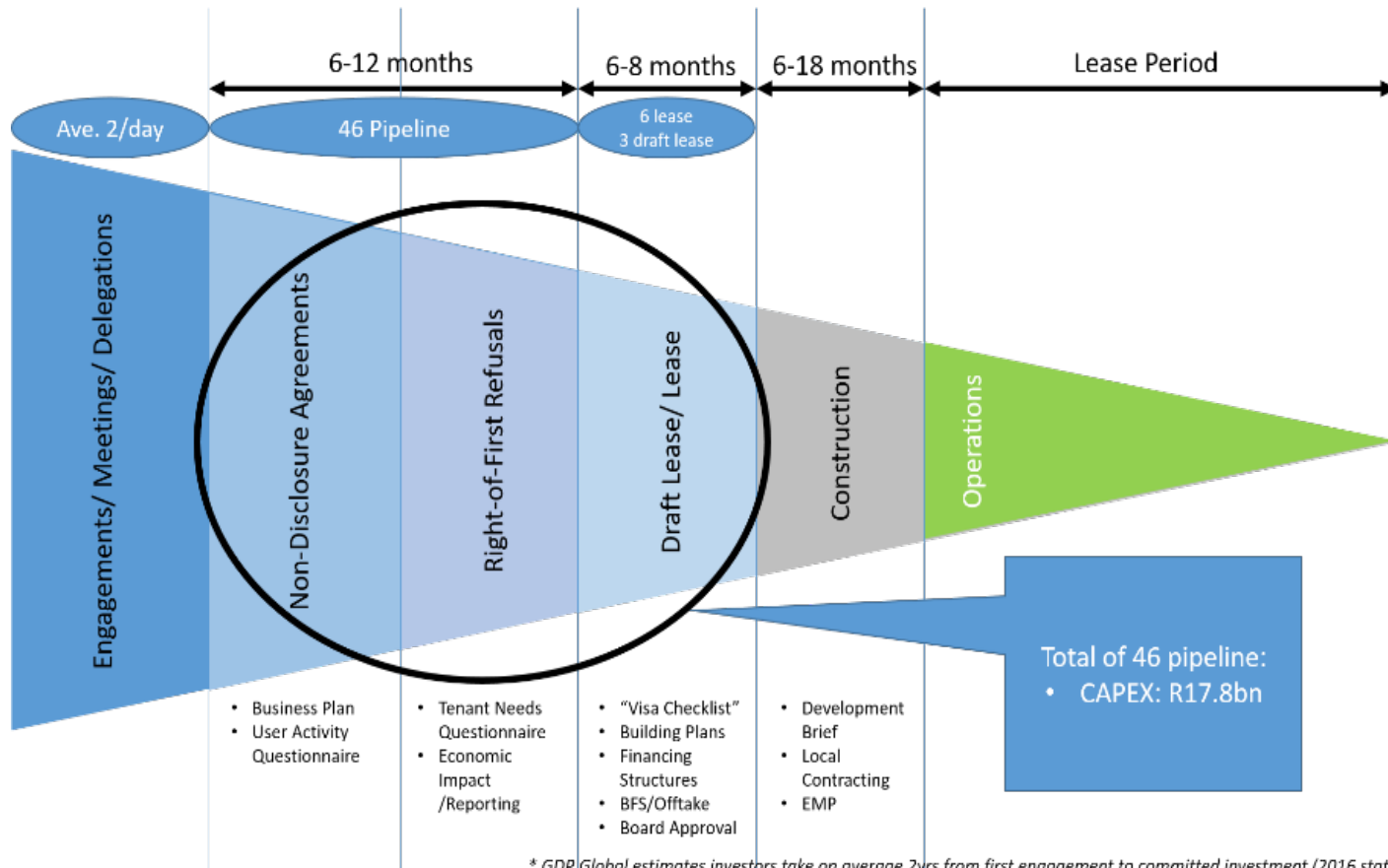
Capital investment per annum Cumulative



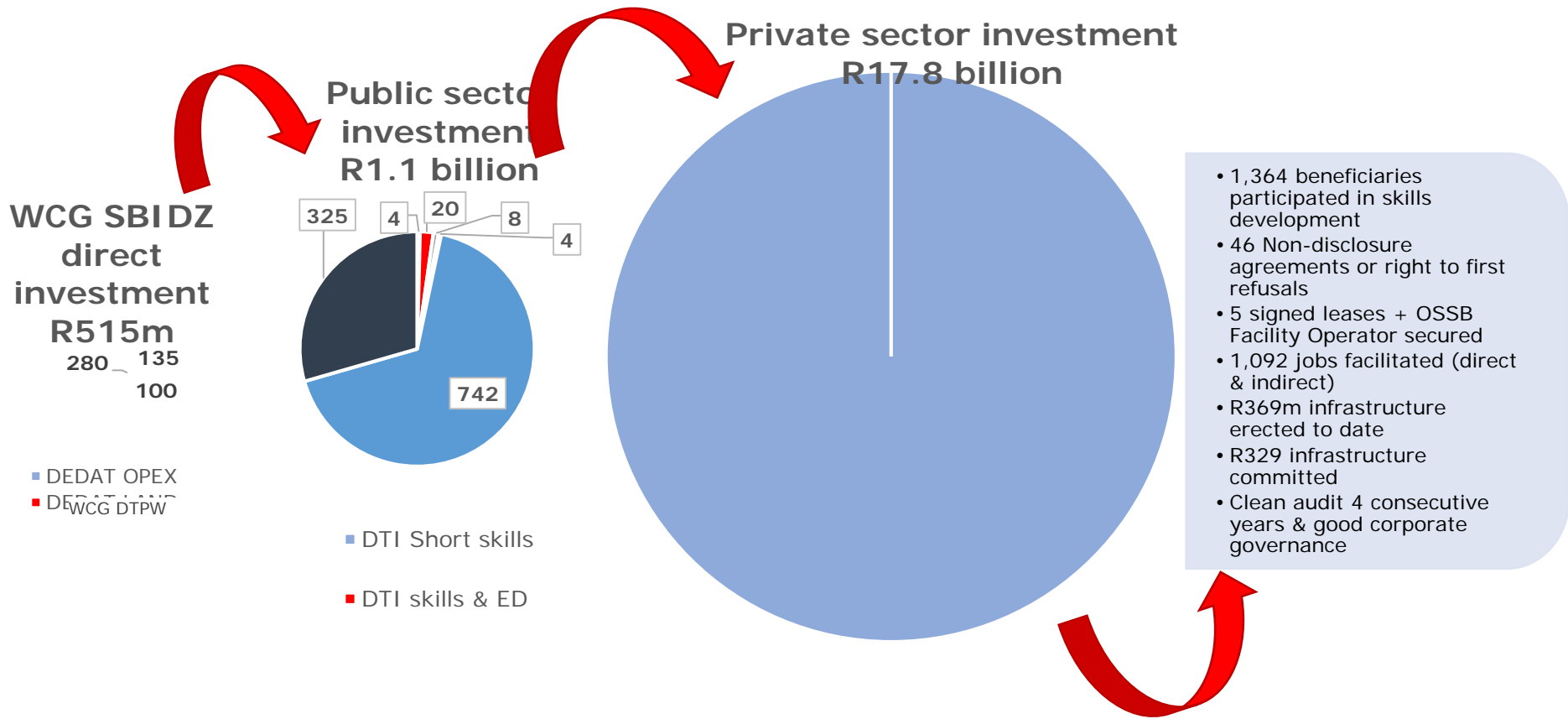
Western Cape
Government

Transport and Public Works

Investment Glimpse



IDZ: Funding unlocked since 14/15



Investment Glimpse



Saldehco Pty Ltd



Altus France

An international logistic base operator with more than 20 years' experience managing and operating Offshore Supply Base in Asia and Africa.



HARPS Holdings Pte Ltd

A private investment company with interests in Oil & Gas, Marine, Trading, and Real Estate. The company has a strong presence in Africa as well as a strong passion to connect Africa with the rest of the world.



Semona

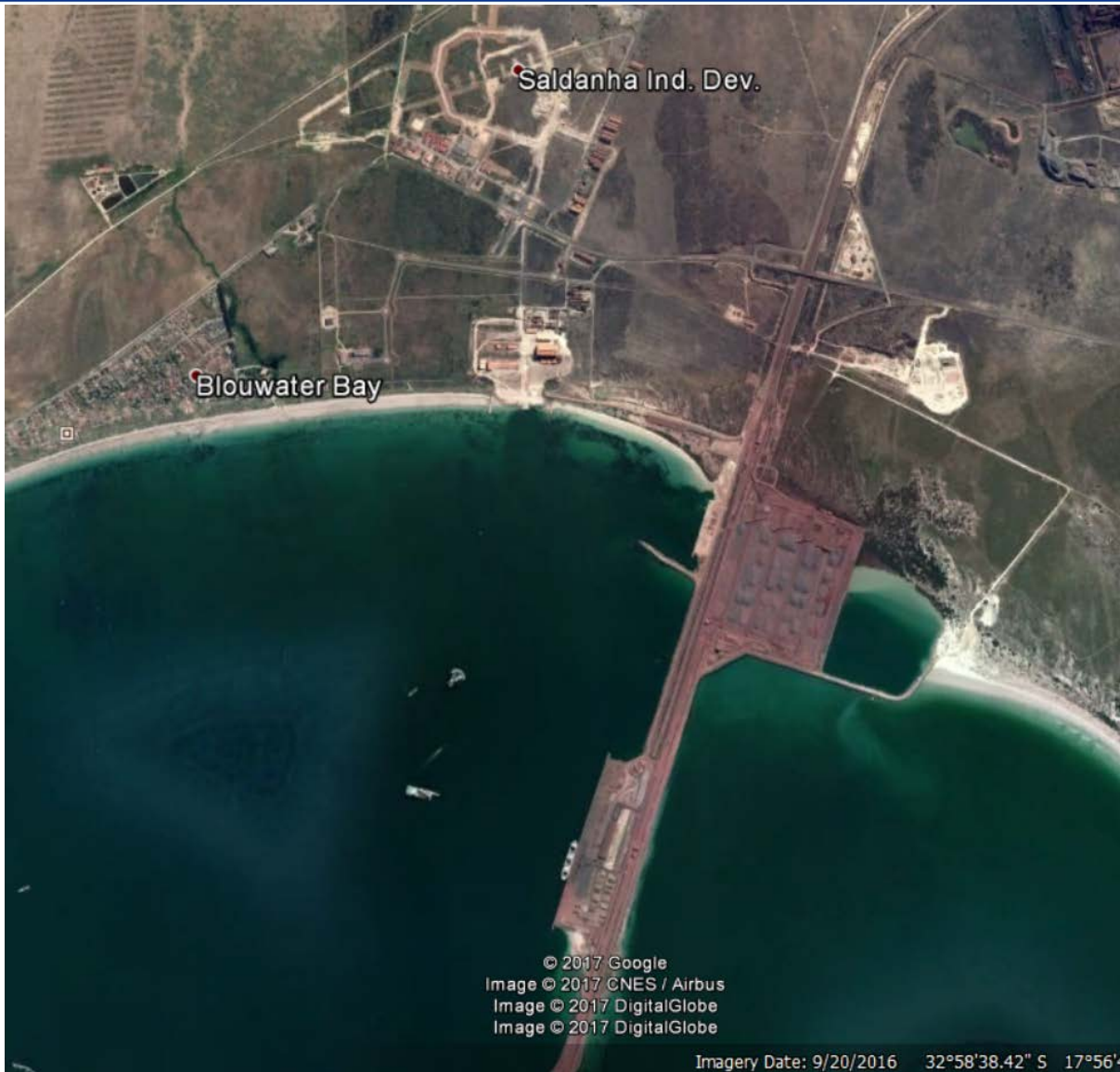
Semona is a B-BBEE Level 1 South African owned company that focuses on dynamic, innovative, and effective solutions to the needs of those who operate in the oil, gas, energy, and manufacturing industries across continental Africa and beyond. Semona's operation has a specific focus and emphasis on the energy sector – with the scope of work that extends over the African continent.



Western Cape
Government

Transport and Public Works

HOW DO YOU FEEL ABOUT . . ?







WHAT WILL IT TAKE?



THE ECONOMY

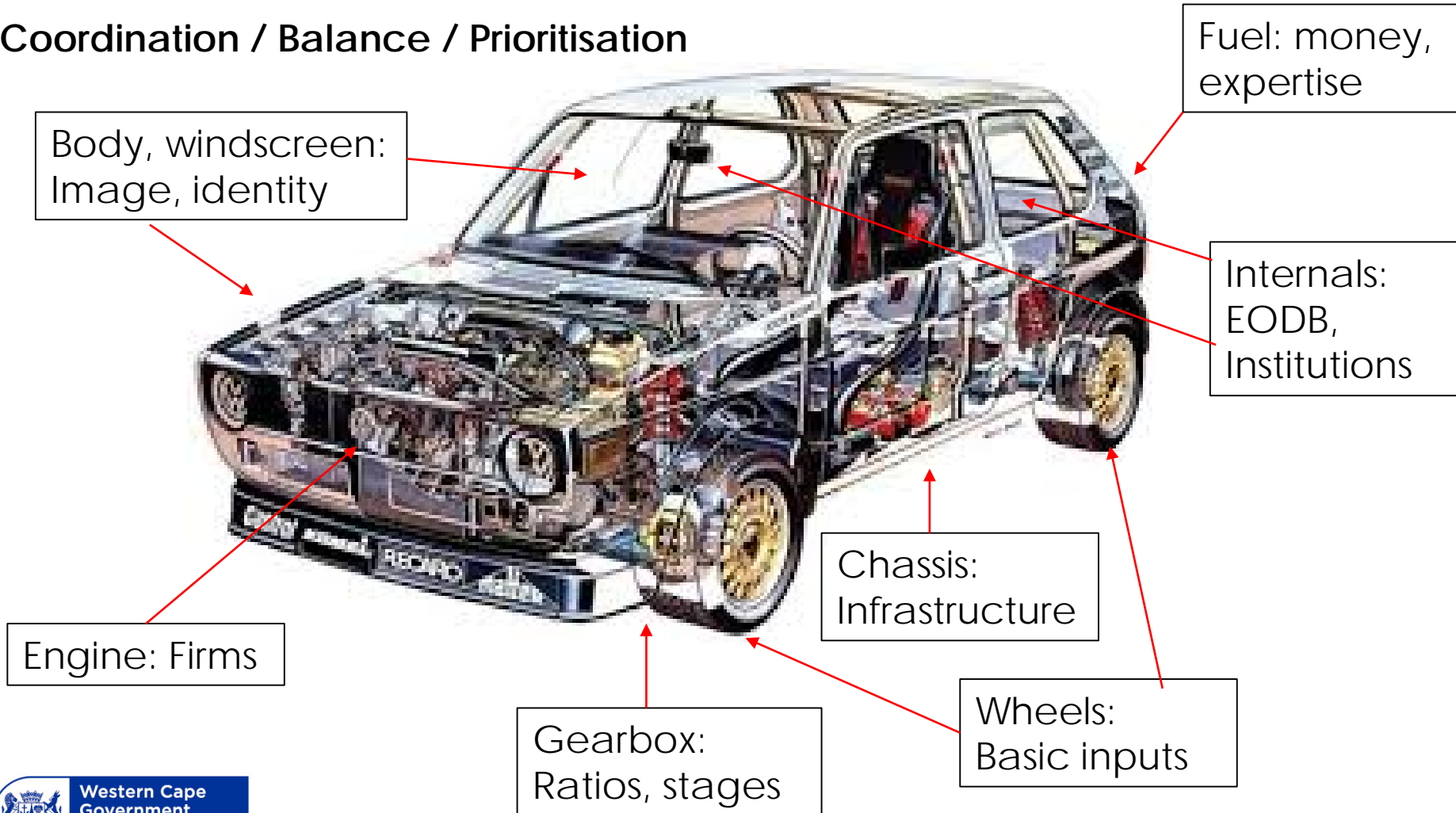
- **SMME Development, Local Procurement**
 - Informal traders
 - SME database, supply chain restructuring (preferential procurement)
- **Skills Development**
- **Infrastructure**
 - Roads, electricity, water
 - Town upgrades (SRAs), catalytic projects, transport hubs, container parks, small harbours, resorts
- **Safety & Security**
- **Investors**
 - Confidence, promotion of area, investor care
- **Conducive Business Environment**
 - Red tape reduced, cleanliness, etc.
- **Sector Development**
 - Tourism, aquaculture, agriculture, agri-processing, fishing, mineral beneficiation

THE ECONOMY



Framework for Action

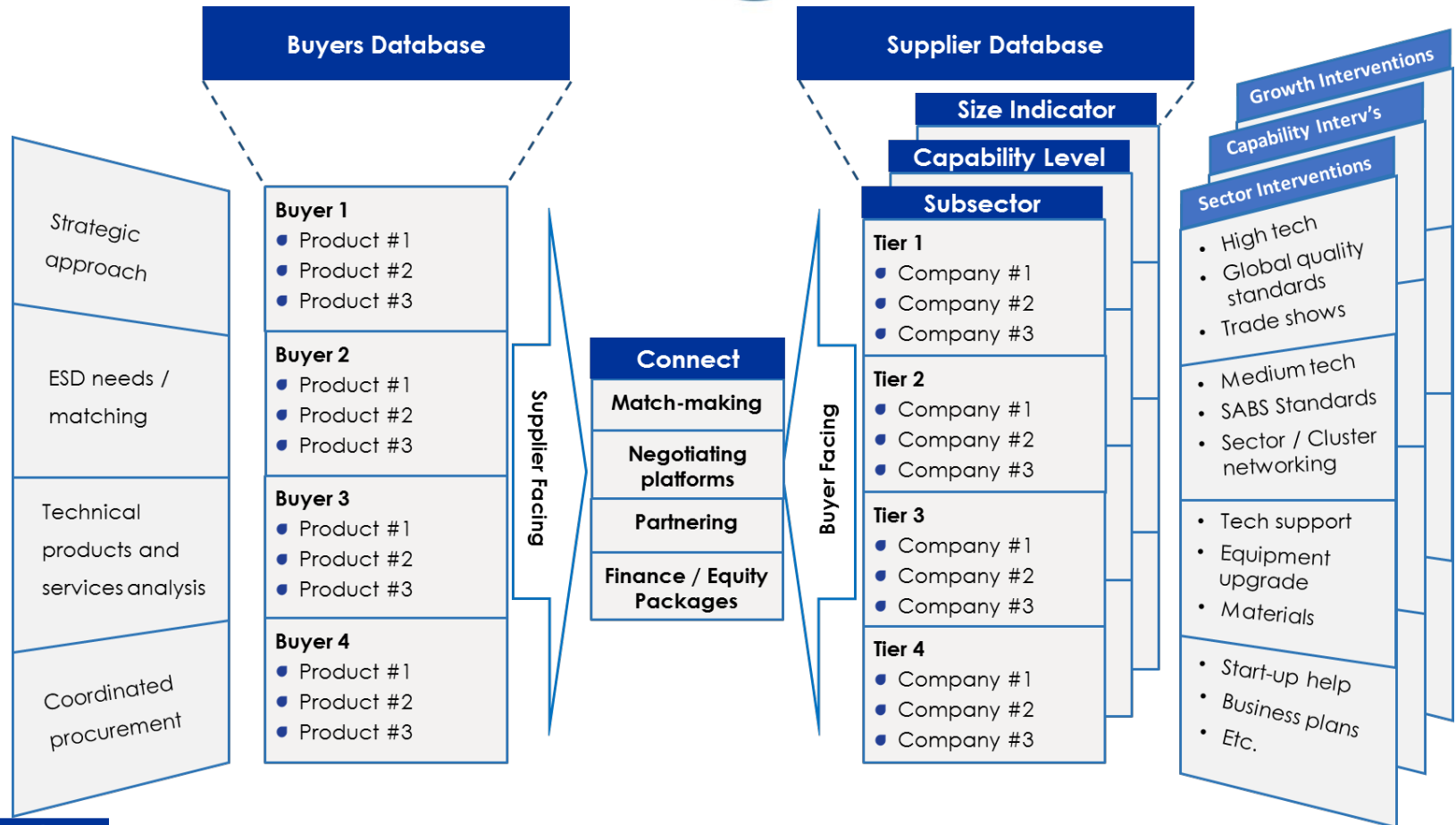
Coordination / Balance / Prioritisation



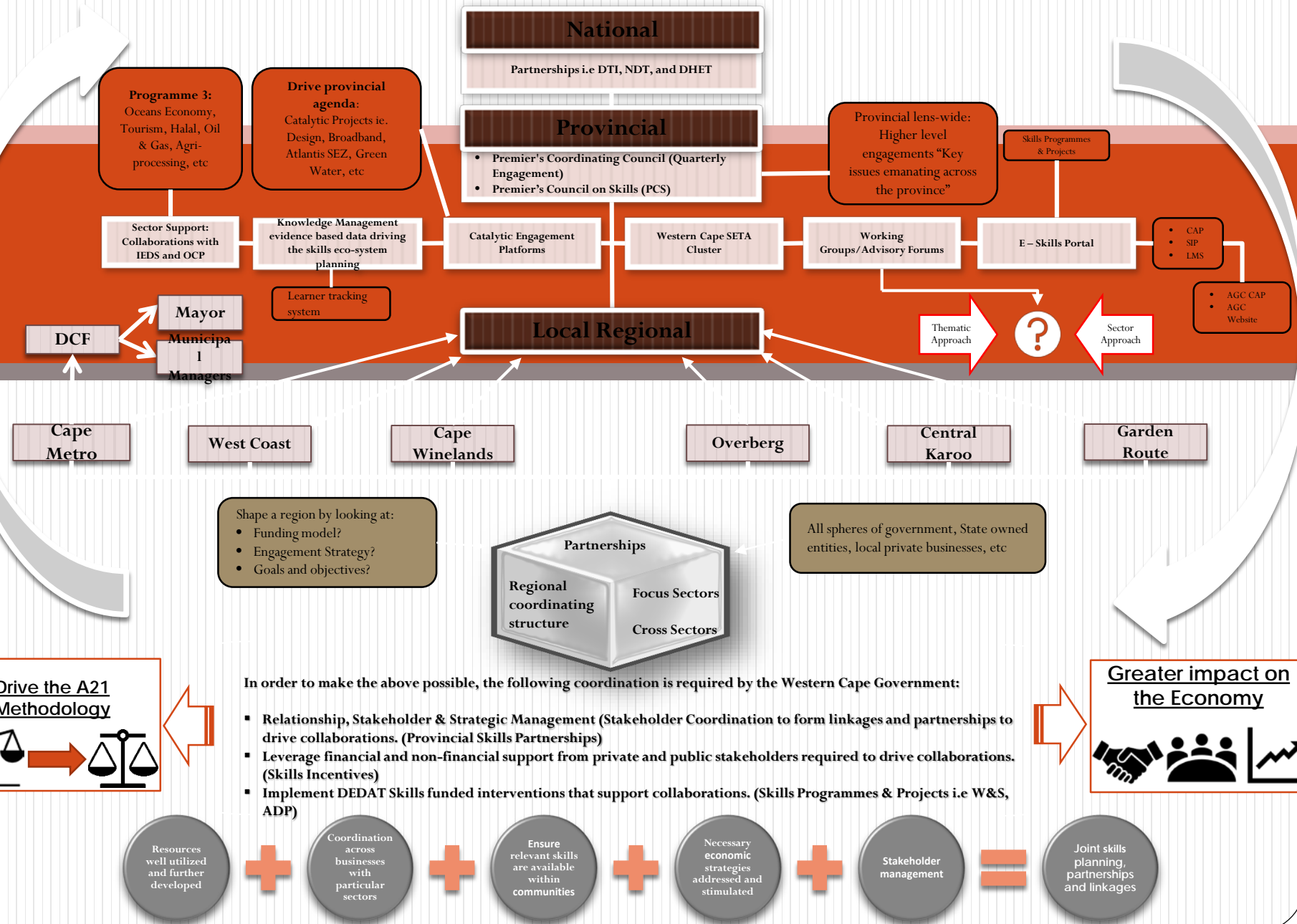
Economic Growth & Development

Priority Areas	Lead Department	Supporting Departments
Grow the SMME sector by rearranging and strengthening the delivery of SMME support	DEDAT	SBM IDZ
Improve the structure of the local economy by increasing the competitiveness of key value chains	DEDAT	SBM IDZ
Attracting investors and customers by creating a systematic investor response approach	DEDAT	SBM IDZ
Increase local employment by improving labour market efficiency	DEDAT	SBM IDZ
Skills development (Artisanal Game changer)	Strategy DEDAT	SBM IDZ

Focus on Localisation – SMME Ecosystem



The Skills Development Goal: To enable and support Economic Growth



OTHER



Thank you