



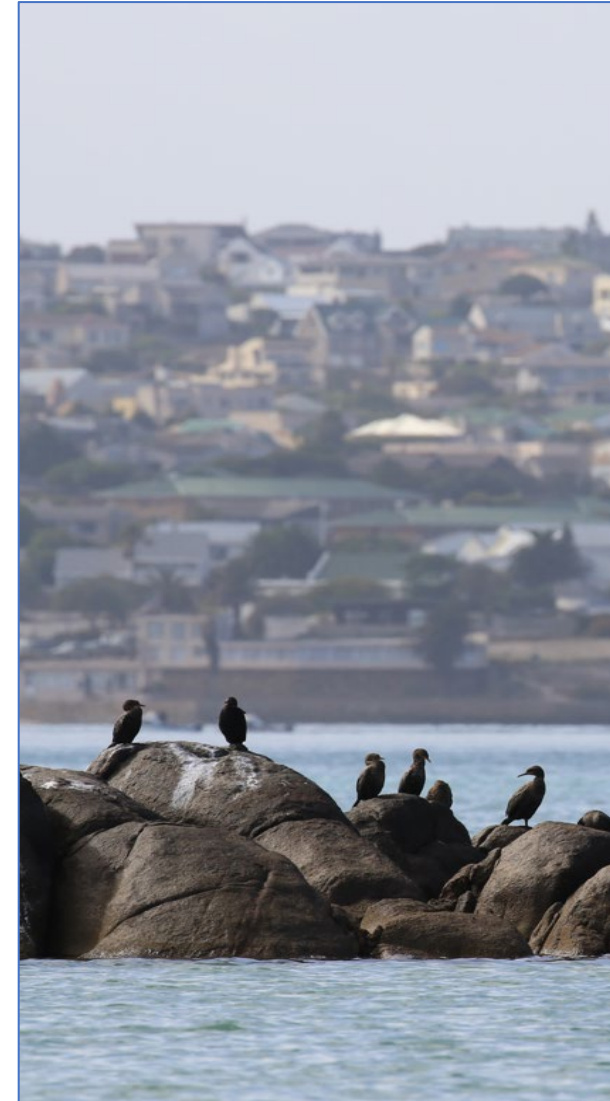
Welcome



OPEN DAY - 8 NOVEMBER 2024

Why are we here?

- Out of Interest/Concern***
- To be Inform***
- To Act***



OPEN DAY - 8 NOVEMBER 2024

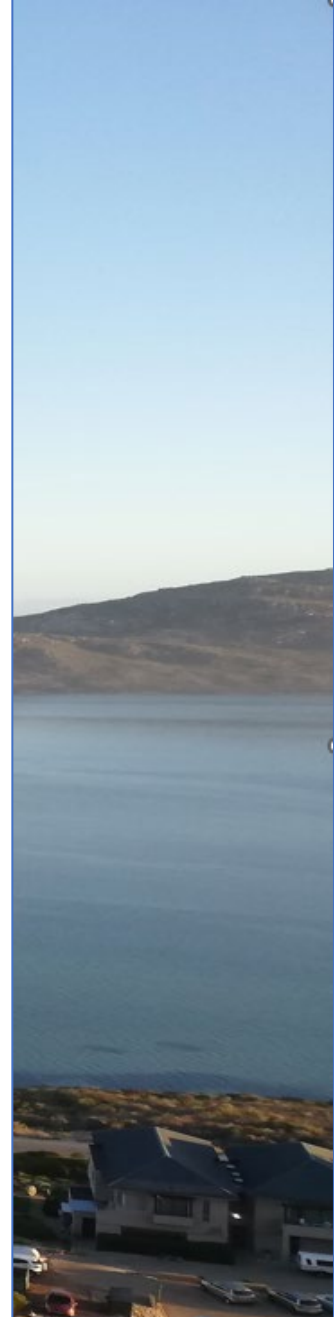
- About the SBWQFT
- 10 Year Monitoring Program
- Our Impact
- Our Logo

01	Registration	08h15
	Please ensure that you bring your ticket with you for scanning at the Registration Desk. Tea and Coffee will be served.	
02	Welcome	09h00
	Jacques Bezuidenhout, SBWQFT Chairperson	
03	Exploring the latest marine research discoveries: A deep dive into Saldanha Bay and Langebaan's marine, estuary, and coastal areas	09h20
	Dr Alison Kock, SANParks	
04	Early Warning System Technology for Detection of Marine Mammals: Within the Saldanha Bay Aquaculture Development	09h50
	Phillip Tjale, WWF	
05	Tea Break	10h20
06	State of the Bay Report	11h00
	Dr Barry Clark, Anchor	
07	Lunch	12h30
	Join us for a light lunch and refreshments	

OUR ORIGIN

Act No. 36 of 1998: National Water Act 1956

- New environmental area (system) approach
- All the industries that deposits effluent in a system is responsible for the water quality of that system
- Various Industries had to collaborate to protect the mutual environment
- The Department of Water Affairs initiated the finding of a Water Quality Monitoring Body
- SBWQFT was then founded in 1999



OUR VISION

Saldanha Bay and the Langebaan Lagoon, including its Catchment Area, is a **sustainable ecological system** where the **SBWQFT, Industry, Government and the Community** work together as a team.

Our Mission is to promote water quality and ecological system health by:

- Scientific monitoring, planning, evaluating and reporting
- Equitable sharing of cost
- Informing and the provision of related advice to influence decision making
- Communication with interested and affected parties
- Sound administrative, financial and data management

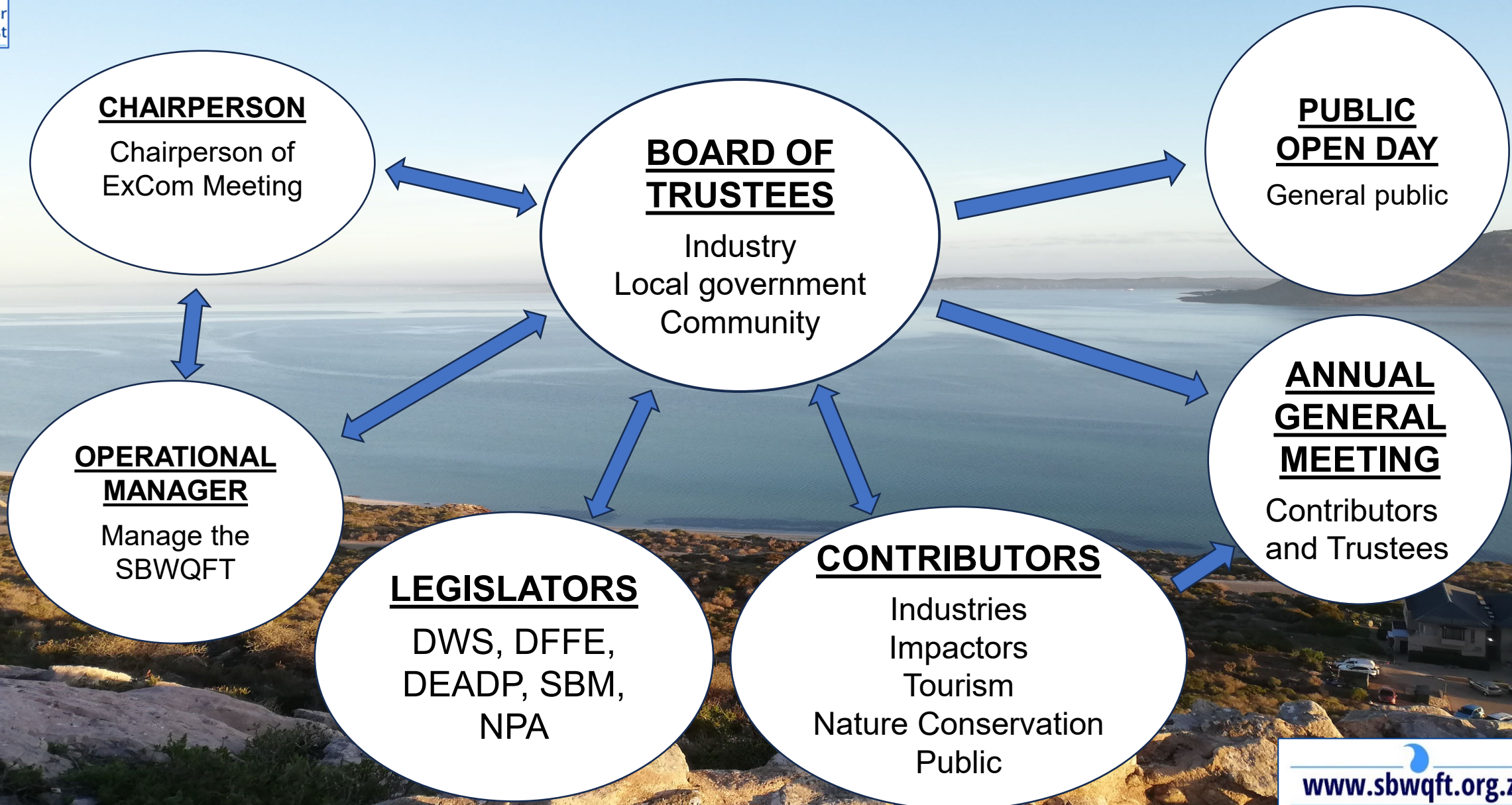
ORGANISATIONS: TRUSTEES



Front: Elmien de Bruyn (Duferco), Adele Groenewald (TPT), Nazeema Duarte (SBM), Jacques Bezuidenhout (SU), Clifton Rajgopaul (Sea Harvest), Ethel Coetzee (TNPA).

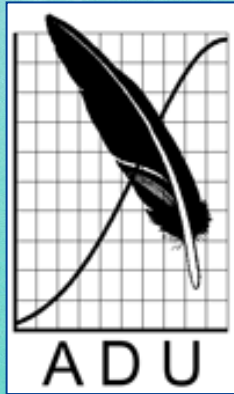
Back: Christo van Wyk (Metsep), Pierre Nel (SANP).

ORGANISATIONAL STRUCTURE





CONTRIBUTORS



MONITORING PLAN (2024 - 2034)

Panel of Experts and Scientists

Geophysical Monitoring

- Currents, Waves, Circulation Patterns and Groundwater Inflows, Coastal Erosion

Water Quality

- Water Temperatures, Salinity, Dissolved Oxygen, Chlorophyll, Nitrate, Turbidity
Sediment Quality

Sediment Quality

- Particle Size Composition, Organic Carbon and Nitrogen, Trace Metals (Al, Fe, Cd, Cu, Ni, Pb, Mn, Hg), Hydrocarbons, Pesticides + Organics + Pharmaceuticals (POP's)

Aquatic Macrophytes

- Water plants



MONITORING PLAN (2024 - 2034)

Benthic Macrofauna

- Invertebrates that live in Sediment

Rocky Intertidal Invertebrates

- Mussels, Barnacles, Limpets, and Snails

Subtidal Invertebrate Communities

- Abalone and West Coast Lobster

Birds and Mammals

- Penguins, Gulls, Terns, Gannets, Cormorants, Oyster Catchers, Waders and Pelicans, Seals

Fish Monitoring

- Surf Zone Fish Counts and Baited Remote Videos

Alien Marine Species



Closed Tender
(4 years)



OUR IMPACT

- **Keep our hand on the development pressure**
 - Industries (New EIA's like Karpowership)*
 - Permits (Desalinations plants)*
 - Trace Metals*
 - Mariculture*
 - Storm runoff from the towns*
- **Monitor Faecal Coliforms around the Bay and distribute results**
 - Quality and quantity of WWTW's inflow into the Bay*
 - Intensify monitoring during the festive season*
- **Monitor groundwater quality and reserves**
 - Elandsfontein Mine*
- **Initiated a project on beach erosion in Langebaan**
- **Advise and inform where possible**



THE (WATER QUALITY TRUST) WQT LOGO

THE SYMBOLISM BEHIND OUR LOGO IS AS FOLLOWS:

- The **dark blue** curved element depicts the deep water of the Bay
- The **bright blue** water drop depicts the water-related activities of the WQT
- The logo must render maximum visual appeal and embody effectiveness



Thank you

